

Seend Parish Neighbourhood Plan



Giles Wood in winter

Green Infrastructure Report (Draft v10) July 2020

Seend Parish Green Infrastructure Network Report

Draft V9, July 2020

1 Introduction to Green Infrastructure

'Green Infrastructure' (GI) is a term used to cover all the different green spaces and routes in a locality, and the way they (do or do not) connect together. The GI of a locality is about the **network** of multifunctional green spaces, urban and rural. This network is made up of lots of different places and routes.

GI takes different forms. It can be delivered at different scales and can have many functions. It offers ways to protect and enhance ecological networks, prepare for climate change, manage flood risk, improve health and well-being and build economic success. It provides active access options and quality green spaces for exercise and socialising. It should also help to enhance landscape character and local distinctiveness.

Seend Parish has an extensive green infrastructure that is arranged around its widespread network of routeways, including footpaths, bridleways and the Kennet & Avon Canal. There are three nationally important Sites of Special Scientific Interest within the Parish. Within the settlements, green infrastructure also plays a particularly important role in the character and distinctive characteristic of place, with green verges a prominent feature especially in Seend Village and Seend Cleeve.

This report sets the planning policy context for Green Infrastructure in Seend Parish, describes the existing green infrastructure network and its key features, before outlining aspirations for improving the GI network in the Parish. It has been updated as a result of comments received during Regulation 14 consultation on the Neighbourhood Plan undertaken during the first quarter of 2020.

2 Policy Context

2.1 National Planning Policy Context

The National Planning Policy Framework 2019 defines green infrastructure as:

'A network of multi-functional green space, urban and rural, which is capable of delivering a wide range of environmental and quality of life benefits for local communities'.

2.2 Wiltshire Planning Policy Context

The Wiltshire Core Strategy 2016 provides the local policy framework for protecting and enhancing green infrastructure across the county. The policies summarised below are of particular note:

CP50: Biodiversity and Geodiversity

Development proposals must demonstrate how they protect features of nature conservation and geological value as part of the design rationale. All development should seek opportunities to enhance biodiversity.

CP52: Green Infrastructure

Development shall provide for the retention and enhancement of Wiltshire's green infrastructure network, and shall ensure that suitable links to the network are provided and maintained.

The explanatory text for CP52 particularly notes the continuing restoration and enhancement of Wiltshire's canal network, and improvements to the rights of way matrix to enhance the quality of routes and access to the countryside, as key priorities for Wiltshire's green infrastructure network.

CP53: Wiltshire's Canals

Proposals will be permitted that are designed to develop the canal's recreational and nature conservation potential, in particular the use of the canal towpath for walking, cycling and interpretation of the surroundings, (for example the provision of information boards giving information about the history / ecology of the canal).

This inclusion of the Canal within Wiltshire Council's strategic policy framework is quoted by the Canal and River Trust as an example of how the planning system can work to protect and enhance the natural environment of the canal system (Canal and River Trust, 2017).

2.3 Wiltshire Evidence Base

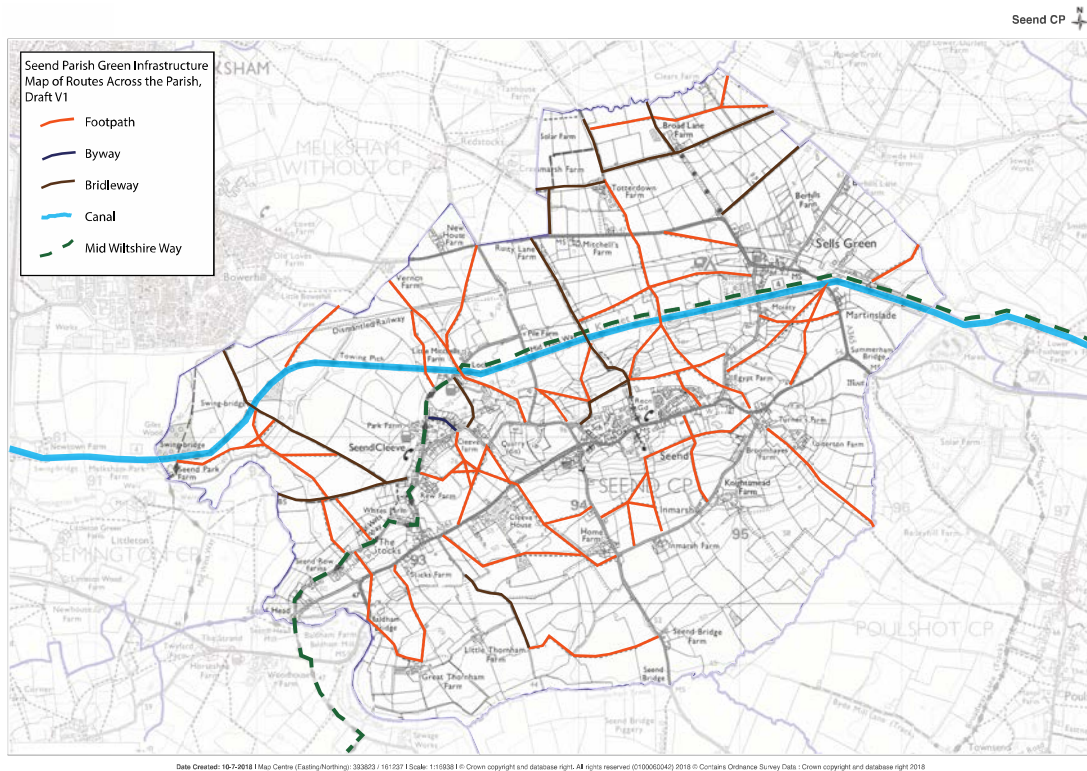
- Wiltshire Core Strategy - Topic Paper 11 Green Infrastructure (2011)
- Wiltshire Biodiversity Action Plan (2008).

3 Existing Green Infrastructure in Seend Parish

3.1 Route Ways and Connections

A key feature of green infrastructure in Seend Parish are the route ways and connections. There is a network of over 50 footpaths and bridleways across the Parish, many of which have been linking local villages, settlements, farms and workplaces for hundreds of years. The Parish includes a section of the Long Distance Path The Mid Wilts Way, and National Cycle Network 4 (mostly along the canal towpath). The footpaths and bridleways are a valuable asset to the community providing access to the countryside, promoting good health and wellbeing, and offering extensive views over the Wiltshire landscape. They also provide biodiversity opportunities and the ability for Parishioners to enjoy being in natural surroundings throughout the seasons. It is important that these paths are kept open and maintained so that all can enjoy the benefits they provide (see Section 4.1). Routeways and Connections are identified on Map 1 below.

Map 1 – Seend Parish Existing Route Ways and Connections



The duty to maintain the Public Rights of Way is shared between Wiltshire Council and the landowners whose land the paths cross. The Parish Council too takes an active interest in keeping these paths open and accessible. There is a designated Footpath Officer on the Parish Council who is the point of contact for local path issues, resolving minor problems and reporting the more serious ones to the Council, such as a blocked path. A small group of volunteers cut back overgrown vegetation and overhanging branches when they are reported thus keeping the footpaths open for people to enjoy.

Seend Parish Council is working on a priced booklet of walks around the Parish to promote use of its routeways (see also Section 4.1 and Appendix 2). It has already produced a leaflet for visitors which outlines a key circular route to take walkers

around a selection of historic highlights (see Map 3). This leaflet is included in Appendix 1.



Left: Cow Parsley in Love Walk, part of the Parish's extensive routeway network

The Steering Group have identified Rusty Lane as a green lane of particular importance in terms of its contribution towards the rural nature of the Parish, whilst providing recreation and biodiversity value. See Appendix 3 for a description of Rusty Lane's important qualities and functions.

Both Wiltshire Council and the NDP Steering Group have carried out footpath surveys to record the use and condition of rights of way across the Parish. Wiltshire Council's survey includes recommendations for improvements, which can be found in Appendix 4.

3.2 The Canal

The National Planning Policy Framework (2019) defines 'open space' as all open space of public value, including areas of water such as rivers, canals and reservoirs (p.69). The Kennet & Avon Canal in Seend Parish is both an important open space, and a key linear routeway running east-west across the northern part of the Parish.

Approximately 5.1km of the Kennet & Avon Canal runs through Seend Parish, as identified on Maps 1 and 2. This includes Locks 17-21, which start at the foot of Bolland's Hill and continue past the Barge Inn and continue further west towards Giles Wood. The Canal is a key feature in the Parish's landscape, and plays an important role in its green infrastructure. This is both in terms of its ecological and biodiversity value, as well as its important role for recreation, tourism and residential use. The Canal and its associated activities, together with its setting are a key part of the Parish's character and heritage (see section 5 of the Seend Parish Design Statement 2019).

The Canal provides an important wildlife route and acts as a stepping stone for mitigation against habitat loss, dispersal and the genetic exchange of plants. It also provides opportunities to enhance biodiversity and ecological resilience (Canal and River Trust, 2017).

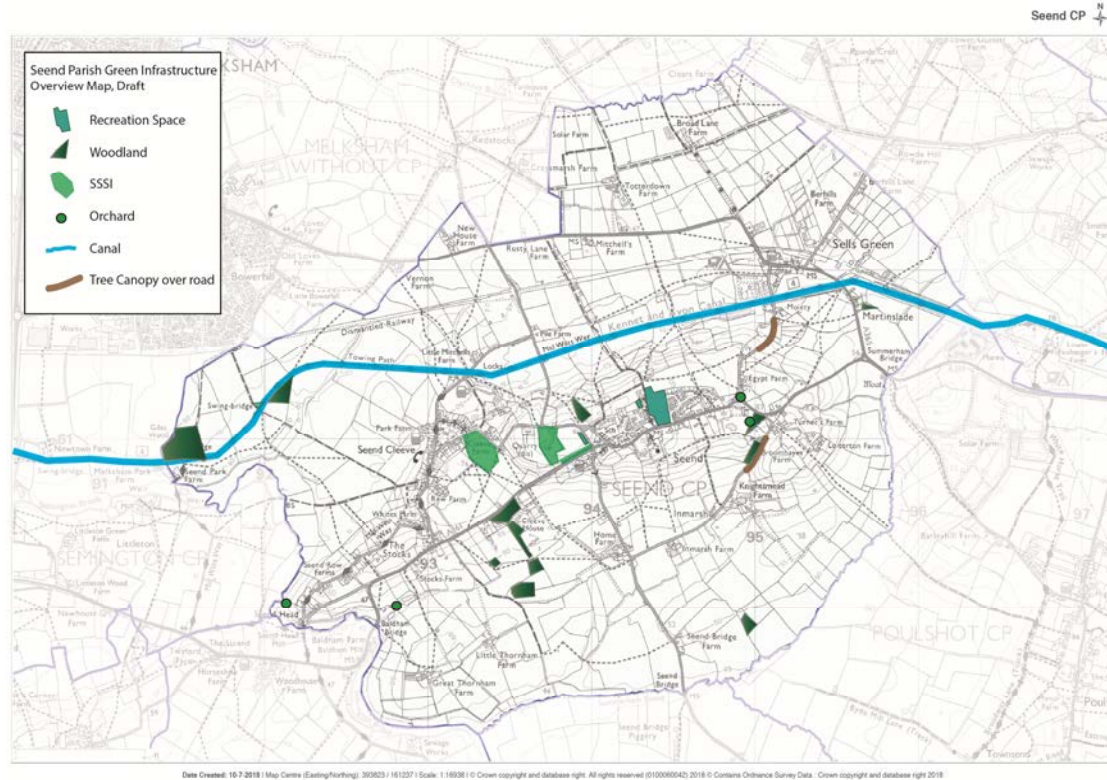


Above: The Canal

3.3 Other Green Infrastructure Features

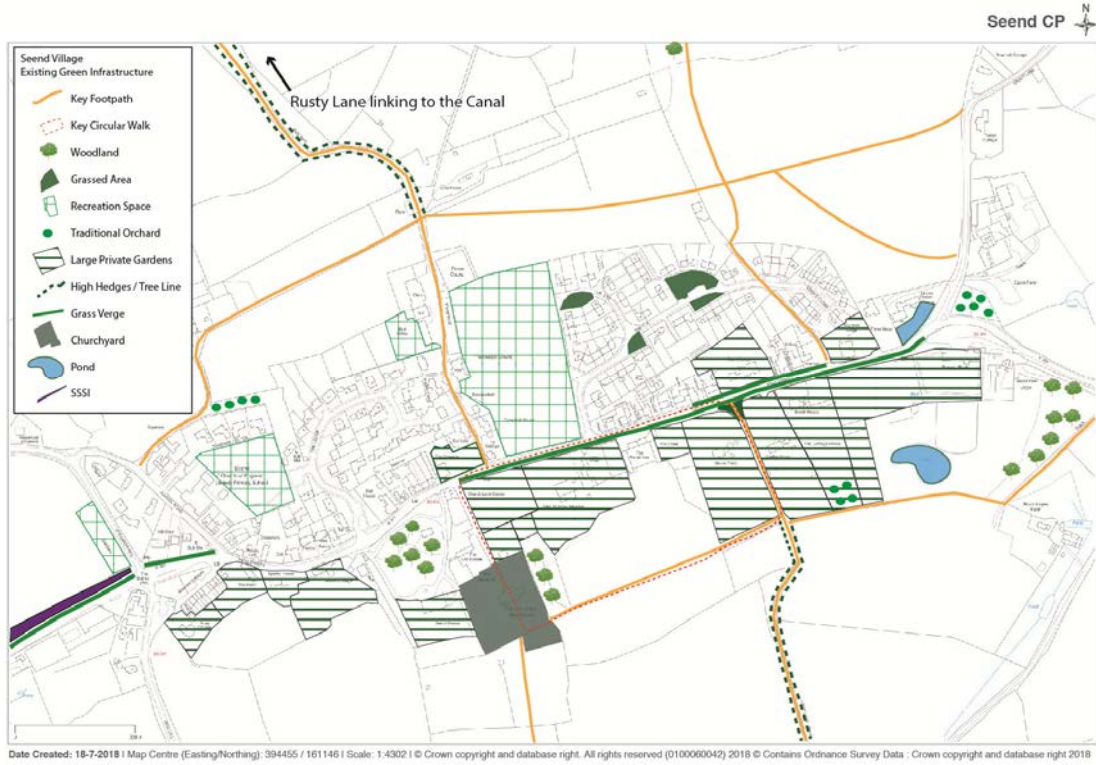
Map 2 below shows other green infrastructure features in the Parish, including nationally significant designations such as the two Site of Special Scientific Interest (SSSI) and locally identified important features such as tree canopies.

Map 2 – Seend Parish – Existing Green Infrastructure (excluding route ways but including the Canal).

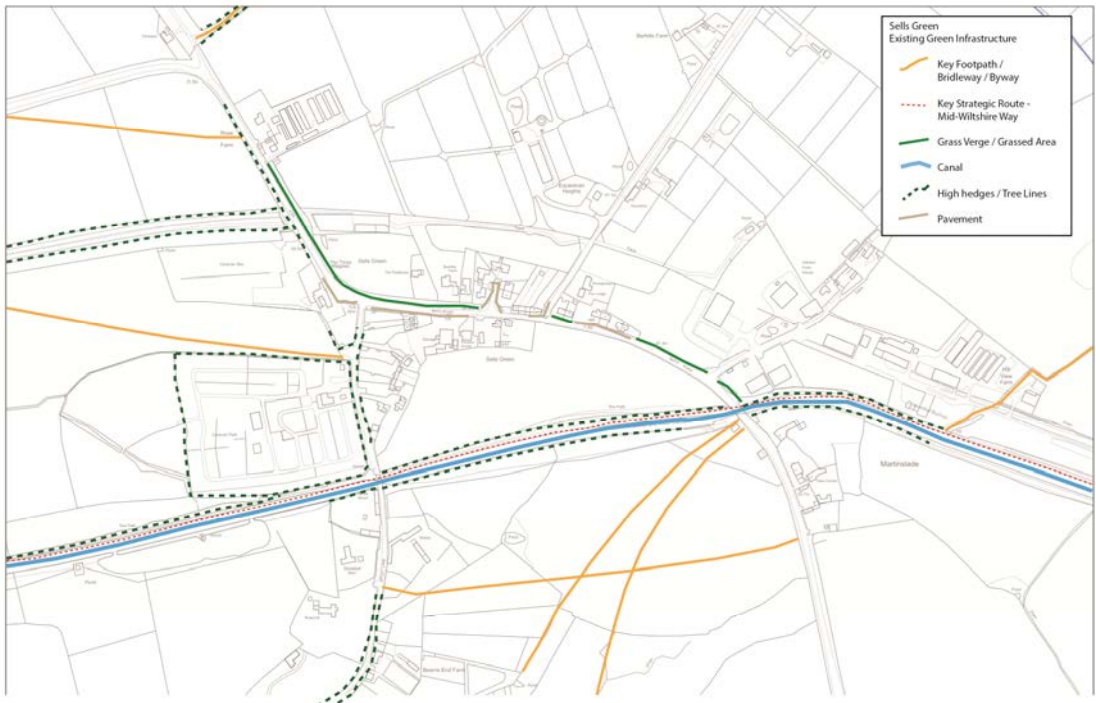


Maps 3, 4 and 5 below show in more detail the existing green infrastructure features for the three main built areas in the Parish.

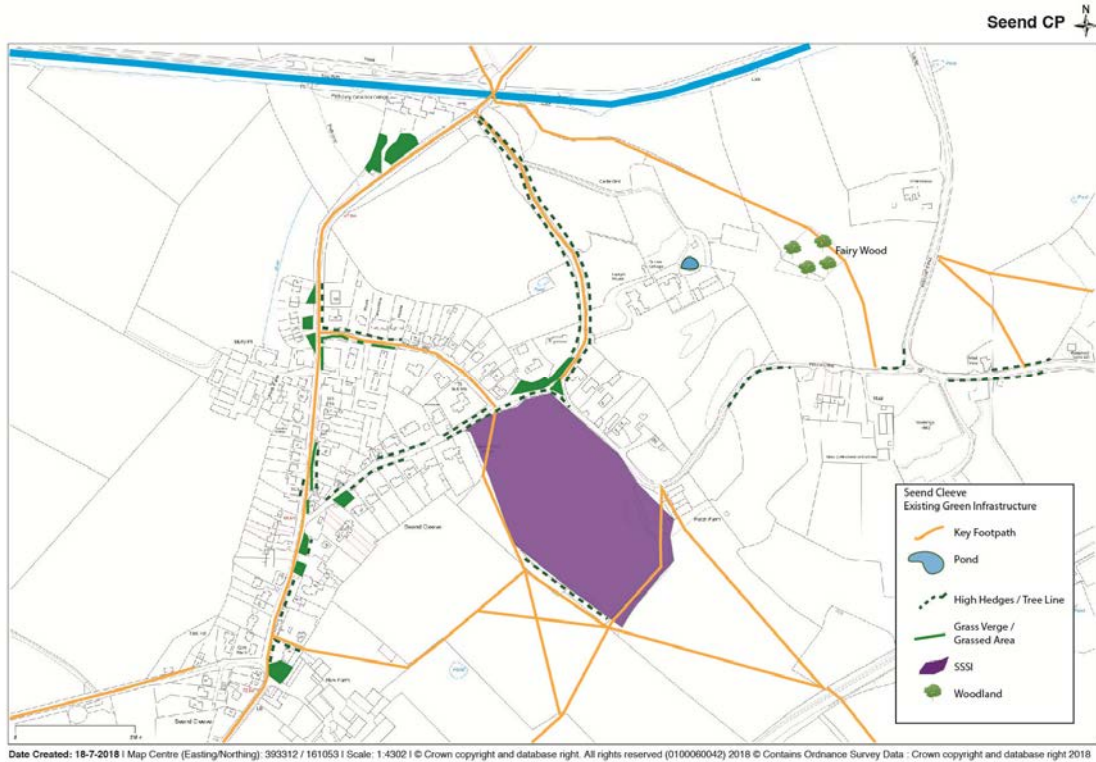
Map 3 – Existing Green Infrastructure Seend Village Inset Map



Map 4 – Existing Green Infrastructure Sells Green Inset Map



Map 5 – Existing Green Infrastructure Seend Cleeve Inset Map



Left: Green verges and stone wall in SeendCleeve



Left: Wide green verges line stretches of Seend High Street

3.4 Habitats and Biodiversity

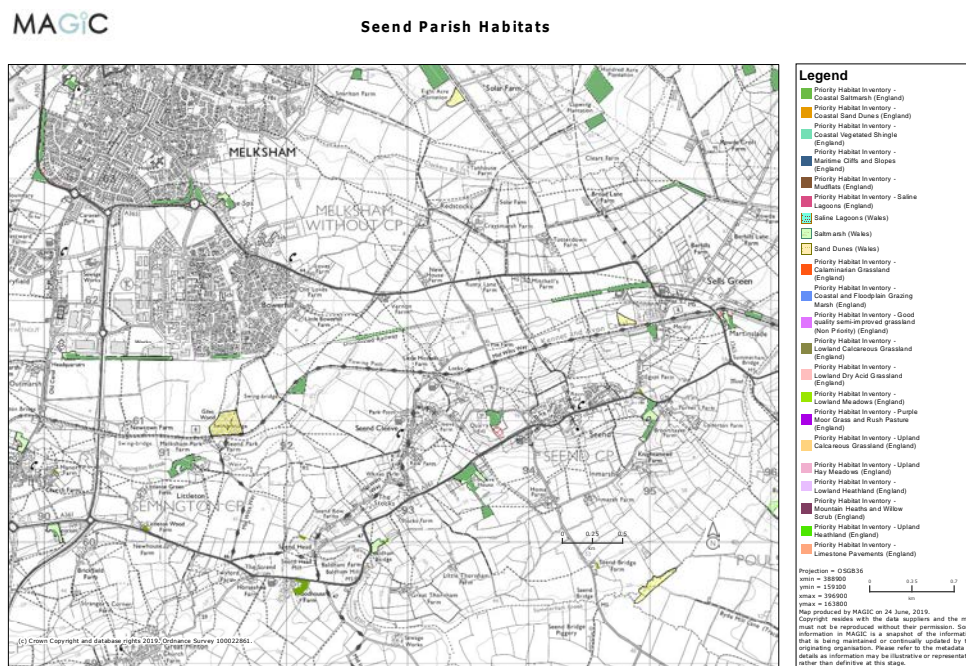
There are two Sites of Special Scientific Interest (SSSI) in the Parish and both are allocated for their geological exposures:

- Seend Cleeve Quarry SSSI is a nationally important site because of the information it yields for biostratigraphic correlation of the Jurassic System¹.
- Seend Ironstone Quarry & Road Cutting SSSI is highly significant in illustrating an unusual iron-rich facies of the Lower Greensand developed near the margins of the marine area formed during the nuffieldensis Zone transgression. Of particular interest is the highly unusual and diverse fauna recorded from the sands, a number of species having been found only at this site².

Natural England manage SSSIs, and their objective is to achieve 'favourable condition' status for all SSSIs. Favourable condition means that the SSSI's habitats and features are in a healthy state and are being conserved by appropriate management. Seend Cleeve Quarry is recorded as being in an 'unfavourable – declining'³ condition. Seend Ironstone Quarry and Road Cutting SSSI is recorded as being in a 'favourable' condition.

There are a number of Priority Wildlife Habitats within Seend Parish, including Deciduous Woodland, Woodland and Traditional Orchards. The distribution of these habitats is shown on Map 6 below.

Map 6 – Seend Parish Habitats Map



1 <https://designatedsites.naturalengland.org.uk/SiteDetail.aspx?SiteCode=S1002007&SiteName=Quarry&countyCode=48&responsiblePerson=&SeaArea=&IFCAArea=>

2 <https://designatedsites.naturalengland.org.uk/SiteDetail.aspx?SiteCode=S1002025&SiteName=Quarry&countyCode=48&responsiblePerson=&SeaArea=&IFCAArea=>

3 <https://designatedsites.naturalengland.org.uk/ReportUnitCondition.aspx?SiteCode=S1002007&ReportTitle=Seend%20Cleeve%20Quarry%20SSSI>

4 Green Infrastructure Network– Opportunities and Aspirations in Seend Parish

This section establishes principles and projects that secure protection and promote the enhancement of the existing green infrastructure as identified above. It also identifies opportunities and means of creating new, high quality green infrastructure in the Parish. Identified projects will be taken forward in consultation with the local community, landowners and, where relevant the Highways Authority and Wiltshire Council.

4.1 Route Ways and Connections

There is a general aspiration to maintain and improve the Parish's extensive footpath, bridleway and byway network. A key part of this is to maintain and enhance the space around the linear routes.

Improving the network must also be balanced with maintaining its rural character. Some paths within the Parish have recently been 'improved' and cleared so that they are now accessible for cars. This causes disruption and damages the rural nature of the network.

In order to increase the use of routeways in the Parish, there are measures that could be adopted to improve access and encourage the use of these paths. For example:

- i) Have more dialogue with landowners to discuss common aims.
- ii) Encourage Parishioners to "adopt" a footpath, by walking it regularly and reporting any problems to the Parish Council. This would support the work of the Footpath Working Party and render it more effective.
- iii) A regular slot of favourite walks promoted in the village magazine.
- iv) Identify footpaths which could be improved in terms of wider access i.e. wheelchairs and prams and seek possible funding from the Community Area Board and Paths Improvement Grants Scheme.

Members of the Parish Council are producing a priced booklet of circular walks in and around the Parish to help encourage footpath use. This is planned for publication during 2020. Draft text describing Walk 1 of these is included at Appendix 3.

4.2 Trees

Mature trees form a key part of the Parish's green infrastructure network as well as distinctive local character. Existing woodland and tree lines are shown on Map 2 above. There is an aspiration to plant more trees within the Parish, however recent projects have come to a halt when considering who would be responsible for the future maintenance of new trees. There are 43 designated Tree Protection Orders in the Parish, and a dedicated Parish Tree Warden. These existing resources could be built upon to promote new tree planting and their future maintenance around the Parish.

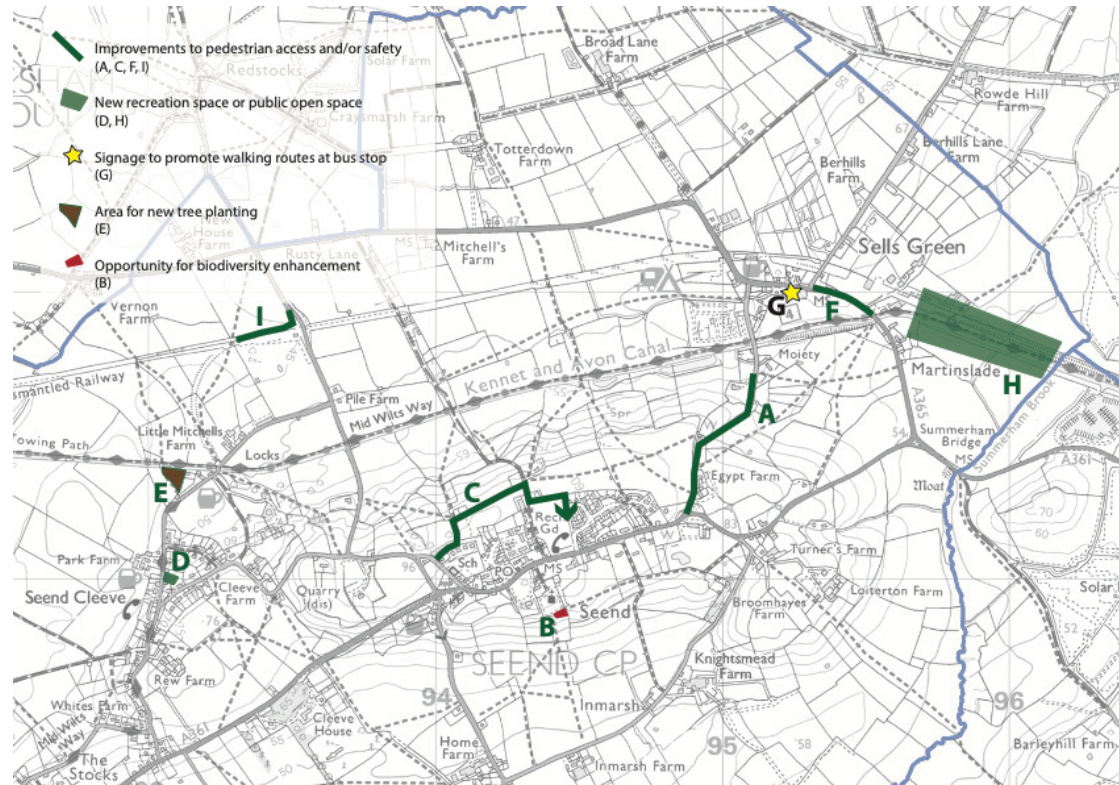
4.3 The Canal

Policy SP11 of the Seend Parish Neighbourhood Plan will only support development along the route of the Canal and its setting where it respects, supports and improves its existing qualities. See section 6 of the Seend Parish Character Statement (2019) for more detail on the issues and enhancement opportunities for the Canal.

4.4 Location Specific Aspirations

Location specific opportunities and aspirations are identified on Map 7 below. Detail is given below.

Map 7 – Seend Parish Green Infrastructure Network – Aspirations for Enhancement Diagram



Seend Village See Map 7 above

- A. Aspiration to address traffic speed and pedestrian safety on Spout Lane between the east of the Village and Sells Green.
- B. Opportunity for biodiversity enhancement of the graveyard at the Parish Church.
- C. Improve school access along the bridleway (PRoW SEEN6) known as Bradley Lane and create a hard path north of the Lye Field Recreation Ground.

Seend Cleeve See Map 7 above

- D. There is currently no recreation space in Seend Cleeve, and there is an aspiration to change this. The new owners of the Methodist Chapel graveyard have expressed an interest in turning this into a public area for community use, perhaps with some seating.
- E. The Steering Group have identified an area for potential tree planting to create a new wooded area.

Sells Green See Map 7 above

- F. Aspiration to explore improvement of the footpath between Sells Green and the Canal.
- G. The bus stop here is a key arrival point for people visiting Seend Parish as well as nearby Caen Hill Locks, so there is an aspiration to improve access and way-finding here. Opportunity for signage at the bus stop to identify walking routes and/or directions to the village and other destinations.
- H. There is an aspiration to create a children's adventure area in Sells Green. A canal side area at Martinslade has been identified as a specific space for sympathetic environmental improvement; this could be a potential children's adventure territory as it is rich in architectural and engineering history (railway, war and canal works remains) and in wildlife on banks and in hollows, etc.

There is currently no public open space in Sells Green, and there is an aspiration to change this by identifying an area for community use.

Outside of Settlements See Map 7 above

The section of footpath (SEEN21) that runs diagonally across the field to Redstocks from Seend Cleeve to the bus stop can be difficult to cross in the winter. The creation of a new hard path along the old railway sidings connecting with the current footpath on the C20 would help overcome this problem. Alternatively (with the agreement of the landowner) the SEEN21 could be diverted to run along the southern hedge of the field to also connect with the C20. See I on the map.

Note. The aspiration to have a safe pedestrian link along the road from Seend Cleeve and New Buildings to the A365 is considered in the Highway and Pedestrian Safety Projects Lists section of the Seend Parish Neighbourhood Plan.

References

Canal and River Trust 2017: <https://canalrivertrust.org.uk/specialist-teams/planning-and-design/planning-policy/the-values-and-benefits-of-waterways/environmental-wellbeing/biodiversity-ecology-and-green-infrastructure>).

Appendix 1 – Key Circular Walking Route Leaflet

brass can still be seen, with the clothiers' shears in the window tracery above.

John Aubrey, writer and antiquary, visited Seend in the 1660s. He wrote "I know not any small country village that has so many well-built houses." He found mineral springs here, and did his best to get Seend developed as a Spa. Nothing came of the plan, owing - he suggests - to the jealousy of the Bath doctors.

In the 18th century, Seend was given a fresh lease of life by the accident that it lay on the Turnpike road on one of the main routes from London to Bath. Land became increasingly held by big landowners and the old open-field subsistence farming disappeared. The landed gentry liked the sandy ridge, because of the good air and open views, and built a number of fine houses, which still give the Street its special character.

In 1775 John Wesley opened the Methodist Chapel in Factory Row (now named Weavers' Cottages) which has been in continuous use ever since. The completion of the Kennet and Avon canal (1810) and a branch of the Great Western Railway (1858) meant that, after the industrial revolution, Seend was well placed for transport of heavy goods such as coal and stone. In the 1860s

there were great hopes that the local ironstone (known about since Roman times) could be profitably worked. Blast furnaces were built and linked by a tramway to the canal, and later to the railway station. But the costs were too high, and the furnaces were dismantled in 1889, though iron ore was still extracted from time to time and sent elsewhere for smelting, until 1947, when quarrying ceased. You can see an illustration of the smelting works on the interpretation panel near the canal bridge by the Barge Inn.

During the second world war, the combination of the Thames, K&A Canal and the Avon was seen as a possible last line of defence in the event of an invasion from the south. You can still see concrete pillboxes beside the towpath at Sells Green.

The closing of the canal in the 1950s and of the local railway line in 1966 meant that the village was once more entirely dependent upon road transport. Bus services to Devizes, Trowbridge, Melksham and Bath are supplemented by the village's own community bus the "Seend Shuttle" (timetable on www.seend.org.uk). The derelict canal was restored in the late 1970s and '80s and officially re-opened by the Queen in 1999 and is now in constant use, almost

entirely for leisure purposes. The famous Caen Hill staircase of locks is only a few miles away along the towpath.

In the early 1970s a large sum of money was raised by villagers, chiefly by huge traction engine rallies, to secure the Lye Field as a public recreation area, with sports field, tennis club and children's playground, and to build the Irene Usher Memorial Pavilion. A pretty little Millennium Garden has since been added, adjacent to the Pavilion, and some trees are to be planted to mark the centenary of the Armistice in 1918. A very successful fete on the second Saturday of August each year raises funds to maintain these facilities.

The village also boasts a shop and Post Office in the High Street, a primary school, pre-school playgroup, a village magazine and a Community Centre (the main part of which was built by villagers themselves, since extended). The Centre hosts a Beer Festival on the Saturday of the early May Bank Holiday each year, communal breakfasts on several Saturdays during the summer holidays, a wonderful flower and produce show on fete day, monthly coffee mornings and a pantomime at the end of February half-term week - among many other events and activities.

We also have three popular pubs:

The Barge Inn,
Seend Cleeve, SN12 6QB.
Tel: 01380 828230
www.bargeinnseend.co.uk

The Brewery Inn,
Seend Cleeve, SN12 6PX.
Tel: 01380 828463
www.breweryinnseend.co.uk

The Three Magpies,
Sells Green, SN12 6RN.
Tel: 01380 828389
www.threemagpies.co.uk

All serve food and have been given four or more stars on Trip Advisor.

The Community Centre in Rusty Lane (SN12 6NS) has an attractive members' lounge bar which opens every evening. Visitors can become temporary members for £1 per day.

Public Transport: The 49 bus runs between Swindon, Devizes and Trowbridge and passes through Seend High Street, and the X72 to Melksham and Bath stop at Sells Green and the Redstocks junction on the A365. These are infrequent rural services, so do check for an up-to-date timetable on: nationaljourneyplanner.travelinesw.com or call 0871 200 22 33. A limited rail service is available from Melksham.

A priced booklet of walks in and around the village should be available from late in 2018.

In the meantime you may like to amble along the canal, or try visiting our beautiful church, and then take a stroll through the churchyard. Go through the kissing gate behind the church on the left and follow the path that goes parallel to the backs of some fine houses on your left, with panoramic views to your right. Go through another kissing gate and continue until you descend some stone steps. Now turn left and you will soon find yourself back on the High Street.



More information on the village of Seend and what goes on here can be found on: www.seend.org.uk www.seendcommunitycentre.com

We hope you enjoy your visit.

© Seend Parish Council

WELCOME TO SEEND Some History and Highlights



(Drawings by Mrs Pam Hillier)

The name of Seend is possibly derived from the old English word for sand. The centre of the village runs along a ridge of greensand while the settlements of Seend Cleeve and Sells Green are on the lower clay. There has been a settlement here since early times. Soon after the Norman Conquest there was a village here, with a church, forming part of the royal hunting forest of Melksham.

In the 15th and 16th centuries, Seend was made prosperous by the wool industry. When the church was rebuilt and enlarged in the late 15th century, wealthy clothier, John Stokes, provided the North aisle, where his memorial

Appendix 2 – Draft text for Seend Parish Council book of walks around the Parish (to be added to / expanded upon as work progresses)

Walk 1 – Three Magpies Sells Green

Starting at Spout Lane Bridge, by Caravan Park.

Walk along the Kennet & Avon tow path west towards Seend, at the swing bridge cross the canal and follow the footpath towards Seend Village.

Climb the hill, Rusty Lane, towards the Community Centre in Seend. There is a newly refurbished children's playground here on your left.

Rusty Lane ends at the High Street. Turn right here and you will pass Church Lane on the south side of the A361, going towards the beautiful church of The Holy Cross.

The village shop and Post Office is ahead 30 yards on the right. (Closed Sundays)

If you visit the church follow the path on the left in the churchyard and you will come to a kissing gate. This affords access to the footpath which runs east along the back of the large houses on the South side of the High Street and affords wonderful views of the Salisbury Plain to the South.

Keep to the footpath please, and keep dogs on leads.

Go through another kissing gate and head towards some stone steps down to Love Walk. Here turn left up Love Walk towards The High Street.

Cross the road here and turn right along the street. Just past Badbury House there is a footpath, bordered by walls on your left, which leads to Cooks Close and The Lye. At the end of this footpath you cross the road towards the footpath which leads across the field down to the canal and a footbridge across the canal. You turn right on the towpath to return to the Three Magpies/ Caravan Park.

Appendix 3– Important Green Lanes

Rusty Lane from the Tennis Courts to the A365 Bath Road

BEAUTY:

The green lane enabling access to the Kennet & Avon Canal and the open countryside to the north of Seend Village, is an important and tranquil access route to the open spaces of valley. From the elevated position at the Bradley Lane junction the lane offers wide views of Roundway Hill, particularly in winter when the shading from trees has disappeared.

HISTORICAL SIGNIFICANCE:

The green lane connects Seend Village with the heritage asset and linear wildlife parkway that is the K & A canal.

RECREATIONAL USE:

The green lane permits sustainable access to the other settlements in the Parish, on foot and bicycle, and on horse. Rusty Lane is a key part of the Parish footpath network which permits access through connected footpaths and bridleways.

The lane is often used by canal boaters wishing to explore Seend, or use the village services, including connecting with public transport at the A361.

TRANQUILITY:

Tranquillity is a key feature of this green lane and is a feature all along its length with the exception of the length in proximity to the A365.

WILDLIFE:

The ancient hedge line, mature trees, predominantly Willow and Chestnut provide valuable habitat for a wide range of avian and mammalian species, including bats.



Northern end of Rusty Lane

Appendix 4 – Footpath Surveys

2.1 Steering Group Survey

Dated 29.10.16, by C&JW

Path Identity	Status	Structure	Grid Ref.	Works Required	Comments	Use
SEEN 52	fp	Finger post	9310-6127			High
SEEN 52	fp	Canal Bridge	9305-6139			“
SEEN 52	fp	Stile	9305-6141			“
SEEN 52	fp	Stile	9304-6155			“
SEEN 52	fp	Stile	9296-6175			“
SEEN 12A	fp		9333-6070 to		Field planted (Maize)	No path
SEEN 12A	fp		9329-6085		(Path Non-Existent)	“
SEEN 23	fp		9320-6078 to		Field planted (Maize)	No path
SEEN 23	fp		9338-6079		Path Non-Existent)	“
SEEN 50	fp		9436-6103 to			High
SEEN 50	fp		9440-6094		Tarmac Road to Church	High
SEEN 31	fp	Finger post	9576-6188	Sign needs repainting		Medium
SEEN 31	fp	Finger post	9581-6192			“
SEEN 31	fp	Wooden Bridge over Ditch	9582-6193			“
SEEN 31	fp	Stile	9582-6193	Needs repair		“
SEEN 31	fp	Armco Bridge Over Ditch	9584-6194			“
SEEN 31	fp	Stile	9584-6194	Needs repair		“
SEEN 31	fp		9585-6195	Undergrowth needs cutting back		“

SEEN 31	fp	Field Gates	9605-6205			“
SEEN 31	fp	Concrete Bridge over Drain	9605-6205			“
SEEN 31	fp	Stile (At Parish Boundary)	9612-6215			“

2.2 Wiltshire Council Survey

Dated 24.03.16, by AH

Path Identity	Status	Structure	Grid Ref.	Works Required	Comments
SEEN5	fp	stile	9431-6134		
SEEN5	fp	pedestrian gate	9432-6135		
SEEN5	fp	stile	9433-6141	Clear	
SEEN5	fp	sleeper bridge	9433-6142		
SEEN5	fp	stile	9433-6143	add step	
SEEN5	fp	fingerpost	9451-6170		
SEEN5	fp	canal bridge	9451-6171		
SEEN24	fp	kissing gate	9450-6171		
SEEN24	fp	stile	9446-6186		
SEEN24	fp	stile	9439-6201		
SEEN24	fp	stile	9438-6205		
SEEN24	fp	fieldgate	9432-6220		
SEEN24	fp	fingerpost	9432-6220		
SEEN25	fp	armacobrid	9451-		

		ge	6222		
SEEN25	fp	stile	9482-6217	Replace	
SEEN25	fp	armco bridge	9482-6217	clear and fill with concrete	
SEEN25	fp	fieldgate	9498-6215	tied up - add stile in fence next to it	
SEEN25	fp	fieldgate	9499-6215		
SEEN4	fp	fingerpost	9506-6197		
SEEN4	fp	kissing gate	9506-6197		
SEEN4	fp	culvert	9456-6193	clear and replace finger next to culvert	
SEEN4	fp	fingerpost	9439-6186	replace finger	
SEEN4	fp	stile	9421-6176	clear and replace step	
SEEN4	fp	armco bridge	9421-6176	fill with concrete	
SEEN4	fp	stile	9421-6176		
SEEN4	fp	astile	9407-6160		
SEEN4	fp	armco bridge	9407-6160	fill with concrete	
SEEN4	fp	stile	9407-6160		
SEEN4	fp	stile	9406-6159		
SEEN44	br	bridlegate	9400-6166		
SEEN44	br	fieldgate	9385-6194		
SEEN44	br	sleeper bridge	9383-6198	Replace	
SEEN44	br	fieldgate	9404-6160		

SEEN44	br	canal bridge	9354-6159		
SEEN27	fp	sleeper bridge	9407-6153	Clear	
SEEN27	fp	stile	9407-6152	Clear	
SEEN26	fp		9411-6152	clear and waymark route	
SEEN26	fp	stile	9413-6149		
SEEN26	fp	stile	9421-6141		
SEEN6	fp	fingerpost	9431-6133		
SEEN6	fp	kissing gate	9431-6133		
SEEN6	fp	kissing gate	9460-6136		
SEEN24	fp	kissing gate	9461-6151		
SEEN24	fp	kissing gate	9454-6161		
SEEN6	fp	stile	9490-6149		
SEEN6	fp		9490-6149	fingerpost required	
SEEN24	fp	fingerpost	9489-6129		
SEEN24	fp	fieldgate	9489-6129		
SEEN6	fp	kissing gate	9465-6131		
SEEN27	fp	stile	9405-6120		
SEEN27	fp	stile	9405-6121		
SEEN27	fp		9404-6125	clear path	
SEEN27	fp	stile	9402-		

			6132		
SEEN6	fp		9387-6123		
SEEN6	fp	stile	9375-6126		
SEEN6	fp	fingerpost	9375-6126		
SEEN29	fp	stile	9382-6120		
SEEN29	fp	stile	9387-6117		
SEEN29	fp	v-stile	9392-6108		
SEEN29	fp	fingerpost	9392-6108		
SEEN1	fp	stile	9516-6105	add step and fingerpost	
SEEN1	fp	stile	9532-6092		
SEEN1	fp		9538-6085		
SEEN1	fp	stile	9540-6083	add step	
SEEN1	fp	stile	9552-6070		
SEEN1	fp	fieldgate	9565-6061		
SEEN7	fp	kissing gate	9505-6113	fingerpost required	
SEEN7	fp	v-stile	9472-6100		
SEEN8	fp	pedestrian gate	9465-6112		
SEEN8	fp	fingerpost	9465-6112		
SEEN7	fp	fingerpost	9470-6099		
SEEN7	fp	stone steps	9470-6099		

SEEN7	fp	kissing gate	9463-6097		
SEEN7	fp	kissing gate	9445-6089		
SEEN7	fp	kissing gate	9439-6086		
SEEN8	fp	stone culvert	9477-6063		
SEEN8	fp	pedestrian gate	9479-6061		
SEEN8	fp	fingerpost	9479-6061		
SEEN7	fp	fieldgate	9455-6044		off line
SEEN7	fp	stile	9442-6078	add step	
SEEN7	fp	armco bridge	9442-6078		
SEEN7	fp	stile	9442-6078	replace step and add second step	
SEEN7	fp	fieldgate	9428-6065		
SEEN9	fp	fieldgate	9427-6058	Waymark	
SEEN7A	fp	fieldgate	9430-6058	Waymark	
SEEN7A	fp	fieldgate	9434-6035		
SEEN7A	fp	fingerpost	9434-6035	replace finger	
SEEN9	fp	fieldgate	9413-6052	put fp finger on telegraph pole	
SEEN10 A	fp	fieldgate	9407-6057		
SEEN10 A	fp	fieldgate	9379-6047		
SEEN10 A	fp	fieldgate	9384-6043		
SEEN10	fp	fieldgate	9403-		

A			6029		
SEEN10 A	fp	fieldgate	9405- 6026		
SEEN10	fp	stile	9367- 6028	Clear	
SEEN10	fp	stile	9361- 6028	Clear	
SEEN10	fp	stile	9341- 6021		
SEEN10	fp	stile	9315- 6039	Clear	
SEEN10	fp	fingerpost	9315- 6039	clear and replace finger	
SEEN11	fp	fingerpost	9324- 6047	replace finger	
SEEN11	fp	stile	9324- 6047	Replace	
SEEN11	fp	stile	9328- 6058	replace steps	
SEEN22	fp	stile	9315- 6075		
SEEN22	fp	stile	9303- 6077	clear path to road	
SEEN22	fp	fingerpost	9301- 6078		
SEEN22	fp	stile	9319- 6078	replace steps	
SEEN12	fp	stile	9328- 6087		
SEEN12	fp	stile	9325- 6090	replace uprights	
SEEN11	fp	stile	9332- 6070	add lower step	
SEEN12	fp	stile	9337- 6080		
SEEN12	fp	stile	9358- 6071	clear and add fingerpost	
SEEN12	fp	stile	9360- 6070	Clear	

SEEN12	fp	fingerpost	9360-6070		
SEEN53	fp	stile	9344-6091	Clear	
SEEN53	fp	fingerpost	9342-6095	Clear	
SEEN12	fp	stile	9325-6103	replace step	
SEEN12	fp	fingerpost	9325-6103		
SEEN46	br	fingerpost	9332-6106		
SEEN17	br	bridlegate	9159-6108		
SEEN17	br	fieldgate	9150-6089		
SEEN17	br	fingerpost	9150-6089		
SEEN16	fp	stile	9150-6085		
SEEN16	fp	kitbridge	9183-6090		
SEEN13 B	fp	kitbridge	9209-6091		
SEEN13 B	br	bridlegate	9199-6117		
SEEN13 B	br	gap	9212-6109		
SEEN13 B	br	bridlegate	9221-6105		
SEEN13 A	fp	stile	9251-6088	Replace	
SEEN13	br	fieldgate	9280-6074		
SEEN13	br	fingerpost	9281-6072		
SEEN45	br	bridlegate	9279-6071		
SEEN13	fp	stile	9251-		

B			6064		
SEEN13 B	fp	stile	9235- 6075	build up with stone around stile	
SEEN14	fp	stile collapsed	9247- 6061		
SEEN14	fp	pedestrian gate	9260- 6048		
SEEN45	br	concrete bridge	9231- 6063		
SEEN45	br	bridlegate	9231- 6063		
SEEN45	br	stone culvert	9212- 6065		
SEMI30	br	fieldgate	9203- 6064		
SEMI30	br	concrete bridge	9203- 6064		
SEMI30	br	fieldgate	9203- 6064		
SEEN15	fp	sleeper bridge	9240- 6060		
SEEN15	fp	v-stile	9240- 6060		
SEEN15	fp	v-stile	9246- 6036		
SEEN15	fp	sleeper bridge	9246- 6036	Clear	
SEEN15	fp	v-stile	9246- 6036		
SEEN15	fp	stile	9255- 6029		
SEEN15	fp	fingerpost	9255- 6029		
SEEN14	fp	fingerpost	9271- 6037		
SEEN14	fp	fieldgate	9271- 6037		
SEEN15	fp	fingerpost	9260- 6030		

SEEN15	fp	pedestrian gate	9260-6030		
SEEN15	fp	stile	9264-6026		
SEEN15	fp	stile	9268-6021	clear and add step	
SEEN15	fp	stile	9270-6019		
SEEN15	fp	fingerpost	9271-6016		
SEEN15	fp	stile	9271-6016		
SEEN15	fp		9269-5999	fingerpost required	
SEEN37	fp		9268-5988	fingerpost required	
SEEN37	fp	stile	9269-5987		off line
SEEN37	fp	stile	9270-5987	add step	
SEEN37	fp	armco bridge	9270-5988	fill with concrete	
SEEN37	fp		9270-5988	stile needed over barbed wire	
SEEN37	fp		9273-5985	clear path through bull grass	
SEEN37	fp	fieldgate	9278-5982	Waymark	
SEEN37	fp	fieldgate	9287-5970		
SEEN37	fp	fieldgate	9294-5966		
SEEN37	fp	fieldgate	9301-5965		
SEEN37	fp	fieldgate	9302-5972		
SEEN37	fp	fieldgate	9302-5985		
SEEN37	fp	fingerpost	9286-		

			6022		
SEEN58	fp	stile	9282-6049	replace step	
SEEN58	fp		9282-6049	fingerpost required	
SEEN58	fp	stile	9286-6060		
SEEN58	fp	stile	9286-6062	fence leaning making it difficult to use	
SEEN38	fp		9289-6062	clear path	
SEEN38	fp	stile	9293-6064		
SEEN38	fp	strap sign	9293-6064		
SEEN58	fp	fingerpost	9287-6073		
SEEN58	fp	sleeper bridge	9287-6073	Clear	
SEEN58	fp	stile	9287-6073		
SEEN20	fp	fingerpost	9309-6128	clear - next to site compound	
SEEN20	fp	canal bridge	9304-6139		
SEEN20	fp	stile	9305-6142	add top step	
SEEN20	fp	stile	9303-6155	lower top rail	
SEEN20	fp	stile	9295-6174	clear path over old railway line	
SEEN20	fp	stile	9295-6176	Clear	
SEEN20 A	fp	stile	9296-6175		
SEEN20 A	fp	stile	9311-6162		
SEEN21	fp	pedestrian gate	9361-6164		off line

SEEN21	fp	pedestrian gate	9326-6180		
SEEN21	fp	stile	9328-6181	add step	
SEEN21	fp		9329-6182		
SEEN21	fp	stile	9329-6184	replace steps	
SEEN21	fp	stile	9336-6212	Clear	
SEEN21	fp		9336-6212	fingerpost required	
SEEN20 A	fp	stile	9318-6149		
SEEN20 A	fp	stile	9324-6140		
SEEN18	fp	stile	9219-6141	Clear	
SEEN18	fp	stile	9228-6156		
SEEN18	fp	stile	9229-6157		
SEEN18	fp	stile	9236-6163	clear from track, sign from track	
SEEN18	fp	stile	9238-6167	Replace - concrete stile broken	
SEEN18	fp	stile	9250-6177	Clear	
SEEN3	fp	fingerpost	9553-6189		
SEEN3	fp	pedestrian gate	9553-6189		
SEEN3	fp	pedestrian gate	9552-6189		
SEEN3	fp	stile	9550-6184		
SEEN3	fp	stile	9539-6164	replace step and top rail	
SEEN3	fp	culvert	9542-		

			6160		
SEEN3	fp	fieldgate	9540-6150	often locked - put stile next to it	
SEEN3	fp	stile	9532-6132	replace step	
SEEN3	fp	fingerpost	9532-6132	Clear	
SEEN2	fp	stile	9532-6169	clear and replace	
SEEN3A	fp	fieldgate	9516-6166		
SEEN2	fp	stile	9529-6167	Replace	
SEEN2	fp	stile	9526-6163	Replace	
SEEN2	fp	stile	9523-6160	Replace	
SEEN2	fp	stile	9517-6154	clear and replace	
SEEN2	fp		9515-6153	path blocked by fence stile needed	
SEEN2	fp	stile	9501-6145	Replace	
SEEN2	fp	stile	9491-6137	Replace	
SEEN2	fp	fingerpost	9491-6137		