

# SPOTLIGHT

Seend & Bulkington



December 2016/  
January 2017

## DIARY DATES FOR LATE NOVEMBER

- 29<sup>th</sup> Seend Parish Council meeting, upstairs in Community Centre, 7.30pm  
30<sup>th</sup> Brewery Inn Fun Quiz, 8pm

## DIARY DATES FOR DECEMBER

- 2<sup>nd</sup> Smart Meter info, Kennet Room, Community Centre, 10am-Noon and 2-6pm  
2<sup>nd</sup> First Friday Coffee Morning, Community Centre Lounge, 10.30am  
2<sup>nd</sup> Seend School Christmas Fayre, 6-8pm  
3<sup>rd</sup> Wine Circle, Community Centre, 8pm  
10<sup>th</sup>-11<sup>th</sup> Christmas Crib Festival, Bulkington Church  
10<sup>th</sup> Coffee Morning for Church Funds, 14 Bulkington, 10.30am  
10<sup>th</sup> N&WW NT Assoc lecture, Community Centre, 2.15pm  
10<sup>th</sup> Christmas Bingo, Community Centre, 8pm  
11<sup>th</sup> Seend Ramblers meet Rusty Lane, 9.30am  
12<sup>th</sup> Mobile Library: 9.40am Seend The Lye; 10.05am Seend Cleeve phone box;  
11.05am Well Inn Car Park, Bulkington  
12<sup>th</sup> Carols at Cleeve House, 7.30pm  
13<sup>th</sup> Christmas Concert, Holy Cross Church, Seend, 7.30pm  
14<sup>th</sup> Nosh and Natter Christmas Lunch, Community Centre, 12 for 12.30pm  
21<sup>st</sup> Brewery Inn Fun Quiz, 8pm  
22<sup>nd</sup> Carol Service with Capella Nova, Seend Church, 7.30pm  
26<sup>th</sup> Paul's Boxing Day Party, Community Centre, 12 noon-6pm

## DIARY DATES FOR JANUARY 2017

- 1<sup>st</sup> New Year's Day walk and home-made soup, start Rusty Lane 11.30am  
6<sup>th</sup> First Friday Coffee Morning, Community Centre Lounge, 10.30am  
9<sup>th</sup> Mobile Library: 9.40am Seend The Lye; 10.05am Seend Cleeve phone box;  
11.05am Well Inn Car Park, Bulkington  
14<sup>th</sup> WEA Day School, upstairs in Community Centre, 10am-4 pm  
15<sup>th</sup> Seend Ramblers – details tba  
19<sup>th</sup> Seend WI Craft Afternoon, Pavilion, 2-4pm  
21<sup>st</sup> **LAST DAY FOR CONTRIBUTIONS TO FEBRUARY SPOTLIGHT**  
25<sup>th</sup> Nosh and Natter Lunch Club, Community Centre, 12 for 12.30pm  
25<sup>th</sup> Brewery Inn Fun Quiz, 8pm  
27<sup>th</sup> Burns Night, Seend Community Centre, 7 for 7.30pm  
28<sup>th</sup> Singles Skittles Competitions (Ladies & Gents) Community Centre, 8pm  
31<sup>st</sup> Seend Parish Council meeting, upstairs in Community Centre, 7.30pm

### **Newcomer to Seend?**

Call in at the shop/PO and ask for your copy of the **Welcome booklet**, which tells you all you need to know about the village.

Visit **[www.seend.org.uk](http://www.seend.org.uk)** and the Spotlight **facebook** page:  
**[www.facebook.com/seendspotlight](https://www.facebook.com/seendspotlight)**

## **Welcome to December/January Spotlight**

As we write, our glorious golden autumn is a fading memory. Let's hope that by the time you read this we'll have some crisp, bright days more appropriate for festive season preparations.

And our villages of Seend and Bulkington, as usual, have come up with a wide range of activities to see us through until February. There are perennial favourites like the School Christmas Fayre, Christmas Carol services and concerts, Christmas Bingo, the New Year's Day walk, Burns Night, plus a Christmas Crib Festival, coffee mornings, lunches, club outings, wintry rambles, quizzes, the singles skittles competition, a lecture by a Bath archivist, a WEA Day School on Islam, and a presentation about Smart Meters. Details of all of these and more can be found within these pages.



There are reports from Seend Parish Council and the Parish Neighbourhood Plan Steering Group, the opportunity to adopt a telephone box or learn how to flower arrange for Seend Church. And if all these aren't enough for you, see the various events happening in other nearby towns and villages in the 'Bits and Bobs' section at the end. So there is no excuse for feeling bored over the next two months.

Whether you are going to be extra busy with family entertaining or enjoying a relaxing break from work, we hope you all enjoy your Christmas and New Year activities. We at Spotlight have a month off, and will join you again in February.

**Warning to contributors:** Please note that you should always send emailed items to the Spotlight address below, not to Sue or Tessa – even if they have emailed you from their own email address. At least one item sent to Sue while she was on holiday has had to be omitted from this edition as it was too late to include when discovered on her return. Thanks.

**Spotlight Contacts:** Contributions for the February edition (copy by Saturday 21<sup>st</sup> January please) can be emailed to [spotlight@seend.org.uk](mailto:spotlight@seend.org.uk) or delivered to Seend Post Office. Editors: Tessa Doe (01380 828617) and Sue Isaac (828461). Joanna Goddard (828488) organises printing Mondays. Juli Wilfort types up the items left at Seend PO. Fiona Johnson is the contact for delivery (828401) and Chris Brooker (828047) for advertising. Do let Joanna or Fiona know if you can help.

**Lost emails:** Emails to Spotlight sometimes go astray for no obvious reason. If email correspondents don't receive an acknowledgement by the end of the Monday after the Spotlight deadline, please ring Tessa or Sue (see above) to check if all is well. And please note the following. **When sending emails to [spotlight@seend.org.uk](mailto:spotlight@seend.org.uk)** please include the word **SPOTLIGHT** in uppercase as the first word of the Subject. This will help the editorial team sifting through all the messages stopped by the SPAM filter, which sometimes include genuine messages for SPOTLIGHT.

**PDFs:** We cannot normally use PDF files of posters etc as they require a specific shape and space. Word documents give us the flexibility to adapt your wording and pictures to fit the space available. Thanks.

## Village events in December and January

(For Bulkington events see pp 10-11)

### ***Brewery Inn Monthly Fun Quiz***

*Wednesdays 21<sup>st</sup> December and 25<sup>th</sup> January at 8pm*

*All welcome!*



### **Christmas Carols at Cleeve House, Seend**



Trowbridge Road, Seend, SN12 6PG

01380 827129

led by The Seend Singers

**Monday 12<sup>th</sup> December at 7.30pm**

Come and join our Carol singing, followed by refreshments.

There will be a Collection in aid of Wiltshire Young Carers.

[info@cleeve-house.com](mailto:info@cleeve-house.com) [www.cleeve-house.com](http://www.cleeve-house.com)



### **CHURCH of the HOLY CROSS, SEEND**

To celebrate the Festive Season with songs and readings, come to our Christmas Concert with a visiting group of singers from Calne Choral

**TUESDAY 13<sup>TH</sup> DECEMBER at 7.30 pm. ALL WELCOME.**

Tickets £10.00 to include a glass of wine. In aid of Church Funds.

Contact Tina Yockney 01380 827139 or Anne Ewing 01380 828557 and Post Office - tickets available from mid-November.

## **Our Annual Burns Night Celebration**

**with Traditional Scottish Fare,  
Entertainment, Music and Dancing to the  
White Horse Ceilidh Band**

**Friday 27<sup>th</sup> January 2017**

**7:00 for 7:30 pm, Seend Community Centre.**

**Licensed Bar & Raffle. Dress: A Touch of Tartan.**

**Tickets (in advance only) £18.00 (includes a nip of whisky).**

**Available from: Tina (827139), Len (828513) or Seend Post Office.**

**In Aid of Church Funds**





## **December and January** **at Seend Community Centre**



AT THE HEART OF  
OUR COMMUNITY

**(Members' lounge bar late opening Christmas Eve  
and New Year's Eve & 11am-2pm Christmas Day)**

### **First Friday Coffee Mornings**

**10.30am Fridays 2<sup>nd</sup> December and 6<sup>th</sup> January in the Lounge Bar**

The December coffee morning will definitely have a seasonal flavour, and the Smart Meter info presentation described in the Bits & Bobs section will be going on in the Kennet Room at the same time.

### **Seend Wine Circle - Drinks for the Festive Season**

**Saturday 3rd December, 8pm.**

£12 including wine, bread, cheese & a mince pie.

Email [seendwinecircle@gmail.com](mailto:seendwinecircle@gmail.com) to book.



### **Nosh & Natter Lunch Club**

**Wednesdays 14<sup>th</sup> December (special Christmas lunch) and  
25<sup>th</sup> January, 12 for 12.30pm. Call 01380 828638 to book.**

### **Christmas Bingo**

**Saturday 10<sup>th</sup> December. Doors open 7.30pm,  
Eyes Down 8pm.**



Free entry – pay per card – raffle – bar – lots of prizes. All welcome!



### **Paul's Boxing Day Party**

**12 noon-6pm in the Members' lounge bar** –it will be a party to remember! Drop in and see.

### **New Year's Day Walk**

**Meet at 11.30am** in Rusty Lane for a 90 minute or so walkaround the lanes, fields and towpaths of the village, followed by delicious **home-made soup** in the main hall.

**Wear boots!**



### **Singles Skittles Competition – Saturday 28<sup>th</sup> January at 8pm.**

See Paul or put your name on the list in the bar to join in this annual fun competition for gents & ladies. There will be prizes (and the glory of having your name on the honours board!) Beginners welcome.

**Merry Christmas and a Happy New Year to all our supporters!**



**And to prove that the Community Centre informs as well as entertains.....**

**North & West Wilts National Trust Association Winter Lecture**

**Saturday 10<sup>th</sup> December** at 2.15pm in the Peter Fisher Hall - speaker Bath Archivist, Colin Johnson. Admission £3 or £2 for Association members.

**WEA Day School - Elizabeth Barrett - "Introduction to Islam"**

upstairs in the Village Room on **Saturday 14<sup>th</sup> January**, 10am-4pm. Course fee: £30. Tea & coffee available; please bring a packed lunch. Call 0845 458 2758 to book quoting reference number C3527833.

**ANNOUNCEMENTS**

*(Please let us know of any births, marriages, deaths, special birthdays, thanks, information etc that you would like to see included here.)*

**PHONE BOXES UP FOR ADOPTION**

BT are planning on removing little used public phone boxes from a number of village locations. We have two in our village, in The Lye and at Sells Green that are on the list for removal or up for adoption. Would you like to see the phone box retained by the community and put to a different use? Do you have any good ideas about that? Would you be prepared to help renovate, transform or maintain one of them? The one in Seend Cleeve has already been turned into a book exchange by volunteers. Please email your thoughts as soon as possible to Seend Parish Council at [clerk@seendparishcouncil.co.uk](mailto:clerk@seendparishcouncil.co.uk).

**FLOWERS AT HOLY CROSS**

The flower arranging team in Seend are hoping to recruit some new members. The group creates arrangements that enhance the beauty of the Church and the welcome it offers to all.

No experience is necessary as we offer training as you develop your skills. The commitment we ask for is being available to create one arrangement per month, apart from Advent and Lent when there are no flowers, when everyone has a rest!

We use readily available flowers and foliage from our beautiful surroundings and gardens. The Church flower fund provides the flowers for festivals.

If you would like to find out more please contact Margaret Coley: Tel 828189.

**CHRISTMAS GREETINGS**

In line with our normal practice, we will not be sending Christmas cards to friends in the local community whom we meet regularly. Instead we will be making a donation to Wiltshire Air Ambulance. But we wish all a very Happy Christmas and a healthy New Year.

Richard & Marion Whitehead



## **NEWS from the SEEND PARISH NEIGHBOURHOOD PLAN**

### **STEERING GROUP**

It has been a busy time for the Steering Group.

You may recall the Group were not entirely happy with the **Housing Needs Survey Report** written by Wiltshire Council based on the responses you gave to the Survey. After detailed analysis we found that some figures did not tally, and information that could be useful was missing. In response to our questions we have now received a reply that acknowledges mistakes and corrects some figures, the most significant being a reduction of households in the Parish who require '*affordable housing*'. There is one household presently on the Wiltshire Council Housing Register. The final version of the report, when agreed, will be added to the Seend Parish Neighbourhood Plan website: [www.seendparishplan.org](http://www.seendparishplan.org)

The **Business Survey** was sent to all carrying out business in the Parish, and we were surprised by how many businesses are active here. If you are running a business in Seend and have not received the Business Survey please make contact with Sue McCulloch so that you can be included. We hope for a good response to the 65 surveys sent out, as this makes it a useful exercise; so please if you are a recipient and have not responded yet, let us hear from you.

The **Traffic Sub-Group** presented their report, which has been made much more comprehensive, to us and to the Parish Council. The report is useful in its division of those problems that need addressing in the immediate future, and those ideas about improvements that could be termed a 'wish-list'. The authors have put a great deal of work into the document and it is available for all to see on our website: [www.seendparishplan.org](http://www.seendparishplan.org)

Please get in touch with any of the Steering Group members if you think you might like to attend one of our meetings: we could do with additional members so contact any of us if you think you would like to be involved. You will find the names of the Committee members and links to further information about this complex process on the website.

The next update will be in the February Spotlight, so until then we wish you a Happy Festive Season.

Carola Thorpe on behalf of the S.P.N.P. Steering Group

---

### **LE BEAUJOLAIS NOUVEAU - ERIC LEPINE'S POP UP RESTAURANT**

Eric and Sera want to thank everyone who came on November 18th for making our first pop up restaurant such a successful occasion! We really enjoyed it and we hope you did too!

Look out for the next one in the Spring - 'Ciao Primavera!' - Italian cuisine of course (and locally picked wild garlic for the pesto).



## **SEEND POST OFFICE**

Christmas stamps are now available from Seend Post Office. Below are some of the last recommended posting dates for some popular destinations. If your country is not listed, please ask!

Far East and Eastern Europe	7 <sup>th</sup> Dec
Australia and New Zealand	10 <sup>th</sup> Dec
Germany and Italy	14 <sup>th</sup> Dec
USA and Canada	15 <sup>th</sup> Dec
The rest of Western Europe	16 <sup>th</sup> Dec
Second Class UK	20 <sup>th</sup> Dec
First Class UK	21 <sup>st</sup> Dec

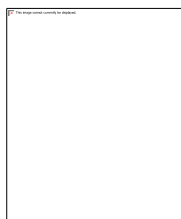


We are now taking orders for Turkeys and all the trimmings.

---

## **CHURCH AND CHAPEL NEWS**

### **CHURCH SERVICES IN DECEMBER 2016**



#### **The Benefice of Holy Cross, Seend, Christ Church, Bulkington and St. Peter's, Poulshot**

*You are welcome to worship at any of the services in any of the churches in the Benefice. There is something for everyone!*

#### **Sunday 4<sup>th</sup> December 2016 (2<sup>nd</sup> Sunday in Advent)**

- 8.00 am Holy Communion (Book of Common Prayer) at Seend.  
*A short and reflective traditional service*
- 9.15 am Parish Eucharist (Common Worship) at Poulshot.  
*A modern language communion service.*
- 11.00 am Morning Praise at Seend.
- 11.00 am Morning Praise at Bulkington (*note change of service*)

#### **Thursday 8<sup>th</sup> December 2016**

- 6.00 pm Christingle service at Seend

#### **Saturday 10<sup>th</sup> & Sunday 11<sup>th</sup> December 2016**

- 10.00am – 4.00pm Crib Festival in Bulkington

#### **Sunday 11<sup>th</sup> December 2016 (3<sup>rd</sup> Sunday in Advent)**

- 9.15 am Parish Eucharist at Seend
- 4.00 pm Crib Festival service at Bulkington (*note change of service*)
- 6.00 pm Evensong at Poulshot.

#### **Tuesday 13<sup>th</sup> December 2016**

- 7.30 pm Christmas Concert with Calne Choral Society at Seend



**Sunday 18<sup>th</sup> December 2016 (4<sup>th</sup> Sunday in Advent)**

- 8.00 am Holy Communion (Book of Common Prayer) at Seend  
10.00 am Nativity service with Blessing of the Crib at Seend  
(*with carols and the Christmas story. Dress the children as shepherds or angels & bring them along!!*)  
11.00 am Parish Eucharist (Traditional) at Poulshot  
6.00 pm Carol service at Bulkington with the Seend Singers (*note change of service*)

**Thursday 22<sup>nd</sup> December 2016**

- 7.30 pm Carol service at Seend with Cappella Nova

**Saturday 24<sup>th</sup> December 2016 (Christmas Eve)**

- 2.00 pm Nativity and Blessing of Crib service at Bulkington (*with carols and the Christmas story. Dress the children as shepherds or angels & bring them along!!*)  
6.00 pm Traditional Carol service at Poulshot  
11.30 pm Benefice Midnight Eucharist at Seend

**Sunday 25<sup>th</sup> December 2016 (Christmas Day)**

- 9.15 am Festal Eucharist at Poulshot  
9.15 am Festal Eucharist at Bulkington  
11.00 am Festal Eucharist at Seend



**CHURCH SERVICES IN JANUARY 2017**

**Sunday 1<sup>st</sup> January 2017 (New Year 2<sup>nd</sup> Sunday of Christmas)**

- 10.00 am Benefice Eucharist at Seend. Maureen's final service

**Sunday 8<sup>th</sup> January 2017 (Epiphany)**

- 9.15 am Parish Eucharist at Seend  
11.00 am Parish Eucharist at Bulkington  
6.00 pm Evensong (Traditional) at Poulshot

**Sunday 15<sup>th</sup> January 2017 (2<sup>nd</sup> Sunday of Epiphany)**

- 8.00 am Holy Communion (Book of Common Prayer) at Seend  
9.15 am Morning Praise at Bulkington  
11.00 am Parish Eucharist (Traditional) at Poulshot  
6.00 pm Evensong (Traditional) at Seend

**Sunday 22<sup>nd</sup> January 2017 (3<sup>rd</sup> Sunday of Epiphany)**

- 9.15 am Matins (Traditional) at Poulshot  
11.00 am Parish Eucharist at Seend  
6.00 pm Parish Eucharist at Bulkington

**Sunday 29<sup>th</sup> January 2017 (4<sup>th</sup> Sunday of Epiphany)**

- 10.00 am Benefice Eucharist at Bulkington

Every Tuesday at 9am: a short Benefice service of Matins (BCP\*) at Poulshot church  
Every Thursday in December Morning Prayer will be said at 4 Northfields,  
Bulkington at 9am. All are welcome.

## **From the Benefice records**

### **Baptisms**

The newest member of the church family is;

Martha Mary Bartholomew who was baptised at Seend on 12<sup>th</sup> November.

### **Funerals**

We pray for the family of;

Kenneth "Bill" Adams whose funeral took place at Semington Crematorium on 9<sup>th</sup> November.

---

## **THE BENEFICE TEA, CHAT AND CRAFT SOCIAL GROUP**

will meet on Monday, 5<sup>th</sup> December, 2106 at 46a Bulkington (Phil Yarde 828116) from 2– 4pm. Bring your own craft item or leave it at home and just come and chat!

---

### **Coffee Morning for Church funds**

Saturday 10<sup>th</sup> December at 10.30am at 14 Bulkington, the home of Eileen and Melvin Difford



*The Bulkington church hosted Benefice Lunch Club takes place on Wednesday 7<sup>th</sup> December at 12.15pm at The Well. This is a great Benefice occasion with a good value two course meal for £12 a head. Contact Jane Coles in advance for the menu (07484064345). New people are welcome to join us.*

## **Seend Church Water Project**

Forward progress is gradually being made on this major project and we are pleased to announce that, following the receipt of a loan from the diocese, we now have all the funds in place to start work. Funds were considerably boosted by the Auction held on 4th October together with the sale of some of the donated items at Henry Aldridge Salerooms on 19th November. We are delighted to say that the combined total is slightly over £4,000. Thank you to everyone who supported the event in whatever way. We were very pleased to note that most of the pews will be remaining in the village. As to the project itself, we hope that work will finally start in the new year. In November we put revised plans to the Diocese regarding the toilet and sewage disposal and have been given approval to go ahead and formalise these. If finally approved this will reduce the overall cost of the project.

Anne and Tina

**Pam Muller has written a book of prayerful poems** with topics on the beauty of the countryside, friendship, encouragement in stressful times, memories of people and events which have influenced the lives of Seend people, with photos of local scenes. Buy it as a Christmas gift from Jane Goman (827121) for £5.50. £1.50 of each book sold via Jane will go towards the refurbishing of Holy Cross Church.

## **SEEND METHODIST CHURCH**

### **Services for December and January 2017**

December	11 <sup>th</sup>	10am	Rev Wendy Tucker
	18 <sup>th</sup>	10am	Mr Douglas Colborne
January	8 <sup>th</sup>	10am	Rev Wendy Tucker
	15 <sup>th</sup>	10:30am	Villages Together at Whitley Methodist Church

Further details will be posted on the Chapel noticeboard or can be available from me.

Thank you, Anne Salter

Dear Friends,

When I began to think about what I would write here I went to see what I had written last year so that I did not repeat myself, I found I had quoted a poem by Madeleine D'Engels called 'After Annunciation' – "This is the irrational season when love blooms bright and wild. Had Mary been filled with reason there'd have been no room for the child." It made me look at some of her other work and I found this:

### **The Risk of Birth, Christmas, 1973**

This is no time for a child to be born,  
With the earth betrayed by war & hate  
And a comet slashing the sky to warn  
That time runs out & the sun burns late.  
That was no time for a child to be born,  
In a land in the crushing grip of Rome;  
Honour & truth were trampled by scorn—  
Yet here did the Saviour make his home.  
When is the time for love to be born?  
The inn is full on the planet earth,  
And by a comet the sky is torn—  
Yet Love still takes the risk of birth.

It feels again, as at so many times in history that 'this is no time for a child to be born'. Not just because of war and conflict around the world causing so many to be killed, maltreated or have to flee for their lives, but because of how divided, black and white, us and them the world seems to be. In the name of 'reason' the world turns its back on families running so their children will have a safe life; young men sent away for safety so they will not become involved in war; unaccompanied minors who 'disappear' into more terror and exploitation – and to demonise them, because it helps us feel more 'reasonable' about it if they are 'them', 'other', 'suspicious'.

And yet, 'Love still takes the risk of birth' and once more we celebrate the birth of a child – a Middle Eastern, refugee child – a child born for the redemption of all of creation. In him is Hope, a reason to keep hoping and trusting and risking all for Love. This Advent and Christmas can we make room in our hearts and our lives and our country and perhaps even our homes for 'the other'? Can we allow others to

welcome us in their turn? Can we take risks to be part of that redemption, to make the world a better place for everyone?

For to us a child is born,  
to us a son is given,  
and the government will be on his shoulders.

And he will be called  
Wonderful Counsellor, Mighty God,  
Everlasting Father, Prince of Peace. Isaiah 9:6

I wish you all the joy and peace and challenge that Advent and Christmas can bring,  
and the bright hope of the Christ child who came to be the Prince of Peace, for the  
New Year and all those to come.

Wendy <>< Rev Wendy Tucker



---

## **BULKINGTON NEWS**

### **BULKINGTON VILLAGE HALL**

Christmas is coming! Soon 2017 will be upon us and already bookings are being made for Birthday Parties in the New Year. The collections from running Nev's Trains are greatly appreciated by Air Ambulance whom we support. Many lives have been saved by this service and we realise that any one of us may live – literally – to be grateful for it. On a domestic note, we must express our gratitude nearer to home. Our neighbour, Roger Futter, is an unseen hero, quietly making sure all is well with the Hall and where needed, keeping it clean and tidy. We never seem to catch him at it, so here's our thanks, Roger! In December, the Hall will be hosting at least one Party, that of the Bulkington Ladies' Group. Last year's BYO Christmas fare and Quiz was a success: let's hope we can match it this year. Happy Christmas and a Good New Year!

Angela Read, Chairman.

### **BULKINGTON LADIES' GROUP**

Our December meeting is a "bring and share" festive meal in the Village Hall. The date is Thursday 15<sup>th</sup> Dec. We will start at the earlier time of 7 pm as it is a full meal and not the usual light refreshments. There will be the usual raffle.

Our January meeting will be a planning meeting on Thursday 26<sup>th</sup> at 7.30 pm in the Village Hall. Please bring some ideas for our 2017 programme.

We wish everyone a very happy Christmas.

Liz Futter 828485

Angela Read 828925

---

**The Mobile Library** will be visiting the Well car park in Bulkington on Mondays 12<sup>th</sup> December and 9<sup>th</sup> January from 11.05-11.30am . Please support this.

---



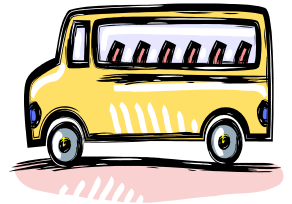
**10<sup>th</sup> and 11th December 2016 (10am-4pm) Bulkington** will be holding a **CHRISTMAS CRIB FESTIVAL** - with a wonderful display of nativity cribs from around the world. There will also be a raffle to win this crib - hand made of olive wood in Bethlehem - a real heirloom.

---

## **SEEND CLUBS AND ORGANISATIONS**

### **SEEND SHUTTLE COMMUNITY BUS**

**Seend Shuttle News:** Many thanks to the two drivers who have offered to join the rota for the new Tuesday run to Melksham via Bromham. We hope to have this up and running in the new year so look out for details then of the new timetable. We will always be happy to hear from any more volunteer drivers so don't hesitate to contact Pete on: petewallis36@hotmail.com.



### **First Wednesday Salisbury Shopping Shuttle**

Sorry to say all seats for the Salisbury Shopping trip on Wednesday 7<sup>th</sup> December have already been filled. If anyone wants to go on standby for a cancellation, ring Rex or Jan Gudge on 01225 706526.

As usual practice in the past, the Shopping Shuttle will not run in January. The first trip in 2017 will be on Wednesday, 1<sup>st</sup> February.

Thanks to all who have supported the Salisbury Shuttle throughout 2016.

Rex

### **SEEND COMMUNITY CENTRE NEWS**

*www.seendcommunitycentre.com – bookings 07703 814111*

It's the time of year when we remind you that Seend Club Membership subscriptions are due on April 1st – and that if you pay before March 31<sup>st</sup> you get £1 off! We've put the subscription cost up slightly for the first time in several years. Membership from April 2017 to March 2018 costs £11, or £9.50 for over 60s. Under 18s are now free, but must be accompanied by an adult in the bar. We continue to offer day membership at £1 for visitors or occasional users. Members can take advantage of the very reasonable bar prices any evening from 7.30pm (6pm on Fridays) and have use of pool and snooker tables (pool is free for members on Monday evenings), dartboard and bookswap and can view selected sporting events on large-screen TV. Membership subscriptions are a valuable source of income for the Community Centre so if you would like to support us, please join! Thanks.

**Events:** Major events for December and January are listed in the early pages of this magazine, and you can find us on facebook.

**Dates for your diary:** Panto 16<sup>th</sup>-18<sup>th</sup> February and Ladies Night 1<sup>st</sup> March.

## **100 CLUB DRAW**

The results of the Lye Field 100+ Club draw for October are as follows:-

£35.00	No. 103	Mr E Bowles
£30.00	No. 081	Mr B Powell
£25.00	No. 120	Mr D Park
£20.00	No. 098	Mr B Powell
£15.00	No. 129	Mrs A Bailey



Winners for November are as follows:-

£35.00	No. 184	Mrs T Yockney
£30.00	No. 50	Mrs S Turner
£25.00	No. 166	Mr N Dark
£20.00	No. 164	Mrs D Sawyer
£15.00	No. 034	Mrs M Burden

Congratulations to all the winners.

The Christmas Draw will take place in December with even bigger prizes! Download an application form from the village website if you want to take part in the next draw. As you can see, the more numbers you have, the greater chance you have of winning one of our prizes!

Karen Cubberley, Seend Lye Field Committee



### **SEEND WI**

For our November meeting we had a fascinating, and very amusing talk, from Kirsty Gray on 'Searching for surnames in Family History'. She highlighted all the challenges and pitfalls faced in genealogy when searching names.

On Wednesday 14<sup>th</sup> December our members are off to Lowden Garden Centre for a Christmas Meal followed by a Christmas Wreath demonstration.

Wednesday 11<sup>th</sup> January is the date of our first meeting of 2017. The title of the talk is 'Brain training techniques for weight loss'! Please do join us for what promises to be a fascinating talk.

There is no Craft afternoon in December. The next one will be on Thursday 19<sup>th</sup> January, 2pm to 4pm in the Pavilion. You don't need to be a member of the WI to take part.

Seend WI meetings take place in the Pavilion, Rusty Lane, Seend at 7.30pm on the second Wednesday of the month unless otherwise notified. For more information please contact Gill Acornley on 01225 707218 or check [www.seendwi.weebly.com](http://www.seendwi.weebly.com)

## **THE ROYAL BRITISH LEGION**

This month we publish another poem written by pupils of the 2014 Sycamore Class at Seend School. This one is called **Fear** and was written by **Tauhid Islam**.

Fear rippled through my body,  
As the Commanding Officer called out five minutes to go,  
We lined up,  
We took a gulp of rum to steady our nerves.  
Fear shook through my body,  
As we walked through the trenches,  
We heard the faint voice of the Commanding Officer calling out,  
“Two minutes to go boys!”  
Fear stopped me dead,  
I heard the Commanding Officer shouting,  
“Let’s go boys over the top,”  
I heard the clatter of machine gun fire and enemy guns,  
I ran for my life...



### **REMEMBRANCE SUNDAY. (13th November 2016)**

A large contingent consisting of representatives from The Royal British Legion, the Melksham RAF Cadets, the 1<sup>st</sup> Bowerhill Beaver, Cub and Scout Group and the Seend School mustered at the end of Church Walk and marched to Church under command of Colonel Nigel Knocker. The parade paused at the War Memorial where wreaths were laid by representatives of The Royal British Legion, The Royal Air Force, The Melksham RAF Cadet Squadron, the Seend Womens Institute, the Seend School and the 1<sup>st</sup> Bowerhill Beaver, Cub and Scout Group. A wreath made by children attending the previous Sunday’s Service was also laid. It then moved into church where the names of those from the village who had given their lives in both World Wars and subsequent operations were read out by Colonel Nigel Knocker. Mr Leo Coley, a veteran of World War II, spoke the Exhortation and the Kohima Epitaph. and the Act of Remembrance was observed. The Standards of The Royal British Legion and the RAF Cadets and the Flags of The Bowerhill Scouts, Cubs and Beavers were placed on or by the altar for the duration of the service. The service was once again taken by the Revd Jane Knowles.

**ARMISTICE DAY. (Friday 11th November 2016):** A group of 20 people, accompanied by Kevin Toft with the Royal British Legion Branch Standard, gathered at the War Memorial for prayers and the two minutes silence at 11.00am.

**POPPY COLLECTION:** The usual team of Poppy Sellers toured the village during the fortnight leading up to Remembrance Day. Our grateful thanks go to all the collectors and those who so generously donated, and also to Kevin Toft for organising and co-ordinating the whole event.

**COMMITTEE MEETING:** The next Committee Meeting will be in the Kennet Room of The Community Centre on Thursday 26<sup>th</sup> January commencing at 1930hrs.

Roger Brind



## **SEEND & DISTRICT RAMBLERS**



25 members enjoyed an excellent meal together at Shaw Country Hotel on Thursday evening, **17th November**.

**Sunday 20th November:** Bob and Brenda Jones led a walk commencing from Newlands Road in Corsham for a circular distance of approx 4 and a half miles, covering roads and tracks. 16 members enjoyed the walk, the weather was cold but stayed dry after an awful night of wind and rain.

**The next walk - Sunday 11th December:** Meet Rusty Lane for a 9.30am departure for a walk of approximately 6 miles commencing from Selwyn Hall, Box at 10.00am. There will be a steep incline at the beginning of the walk. Penny and Ron England will be leading the walk and their contact number is 01380 828949 for further information.

**Sunday 15th January 2017:** Leaders: Tim and Sandy. Contact them nearer the time for information on 01380 739235 (members will be emailed the details).

**Concluding:** May I take this opportunity in wishing all our members a very Happy Christmas & New Year, good health and enjoyable walking with the 'group' for 2017.

Lin Salter

---

## **SEEND SCHOOL NEWS**



The Christmas preparations have begun at Seend Primary School. The older children have started to learn carols for the Christingle Service and there's much excitement about The Landlord's Cat, which is the Nativity play for Holly and Oak Class. The children will be performing on Tuesday 13<sup>th</sup> December in the afternoon and evening.

Now that we are part of the Academy Trust of Melksham (ATOM), the headteachers are working together even more closely than they were before, offering support and sharing training/resources. As part of this closer working relationship, our Headteacher Mrs Chalk, is supporting St Georges's Primary School in Semington until Christmas, whilst Mrs Coleman and the rest of the team here at Seend ensure our well-oiled machine continues to run smoothly.

Oak Class visited @Bristol last week to explore some of the 'Space' activities. They went into the Planetarium and had lots of fun learning through some 'hands on' activities. Some children from Oak Class told me, 'it was the best trip ever!'

Oak Class have also been encouraging birds into their extended outside area. They have hung a variety of bird feeders and are pleased to report that they have seen long tailed tits, coal tits and blue tits feeding from the feeders.

Earlier last month saw the first gathering of this year's Seend School Council. The meeting was a great success and the children were informed of their 'whole school' responsibilities this year. One of the tasks of the school council is to set up a litter

picking rota (which they have done very successfully) as well as organize huff and puff leaders to give out equipment at playtimes. They are also going to be in charge of supporting national fundraising events and have already made plans to support Children in Need.

Did you know that whenever you buy anything online - from your weekly shop to your annual holiday - you could be collecting free donations for Friends of Seend School? There are over 3,000 shops and sites on board ready to make a donation, including Amazon, John Lewis, Aviva, thetrainline and Sainsbury's – it doesn't cost you a penny extra! Go to <https://www.easyfundraising.org.uk/causes/foseend/> to join for free. Every time you shop online, go to easyfundraising first to find the site you want and start shopping. After you've checked out, that retailer will make a donation to your good cause for no extra cost whatsoever! There are no catches or hidden charges and FoSS will be really grateful. FoSS have set this up and are already raising money so if any of you shop online this is an easy way of raising money.

December the 2<sup>nd</sup> is our Christmas Fayre from 6pm – 8pm. Attractions include mulled wine, jewellery, tombola, books/toys etc so please come and support this popular fundraising event. Anyone who would like to have a stall themselves to sell things, or who would like to buy some advertising space, or anyone who has a spare hour or two to help set up and/or run the Fayre should contact Mel Steel, Jenna Crossman or any other committee member (or just let Mrs Coleman know.)

Nicola Coleman, Deputy Headteacher

**FoSS** would like to thank you all for your support over the last year, and we wish you all a very Merry Christmas and a great 2017!

Mel Steel, FoSS Chair

### **SEEND PLAYGROUP NEWS**

I am writing this on “Children in Need Day”. This morning some of the children came dressed as their favourite super hero. We had Pudseys, Spiderman and Tinkerbell. Even our parent helper came in a Pudsey outfit. The children iced spotty cakes which their parents bought for a donation to Children in Need. At this moment we don't know the final amount, but thank you to everyone who contributed.

On Thursday we held a Christmas Shopping event which raised money for the children's Christmas presents and party. Thank you to the committee members past and present who worked hard on the night, and particularly to Laura Awdry who masterminded the whole event over several weeks.

By the time you read this the children will be excitedly dressing up in traditional costumes, to act out the story of the Nativity. Our Nativity Morning for parents and friends will be on Tuesday 13<sup>th</sup> December at 10.15 am at the Pavilion. Please bring your purse as there will be a hamper raffle and a cake stall.

Our Christmas Party will be on the last day of term which is Friday 16<sup>th</sup> December. All our children are welcome both days even if they are not their usual days. (*Contd.*)

We are having a fund raising table at the school Christmas Fayre on Friday 2<sup>nd</sup> December from 6 pm at school. Please come along and support your local school and playgroup. It is a fun evening for the children too.

The new term begins on Thursday 5<sup>th</sup> January, in line with Seend School. We have spaces available for children from age 2 yrs. We wish everyone a Happy Christmas and New Year.

Liz Futter (Playleader) 828485

## **SEEND PARISH COUNCIL**

*N.B. These notes are from the draft minutes of Parish Council meetings, and may not yet have been ratified. Full copies of Parish Council meeting minutes can be found on [www.seendparishcouncil.co.uk](http://www.seendparishcouncil.co.uk)*

The meeting held on **Tuesday 25<sup>th</sup> October 2016** was attended by 8 Councillors with Mr T Murch (Chairman) in the chair. Apologies received from Mrs Carr, Mr Manning and Mr Vaux; also present members of the public.

**Co-option of Parish Councillor:** There was one candidate for co-option, Dr Pamela Akerman. Dr Akerman left the room whilst her application was discussed. Acceptance was proposed by Mrs A'Bear, seconded by Mr Wood, voted unanimously. Dr Akerman then signed the Declaration of Acceptance of Office.

There was **one crime reported** in the Seend Parish on 1<sup>st</sup> October at Martinslade, single vehicle road traffic accident.

Mrs Heatley reported that PC Mark Hough is the new **Community Policing Coordinator** for Trowbridge, Bradford and Melksham Rural. There is now one team policing seven towns and our area, Melksham. He is based out of Trowbridge Neighbourhood Policing. He would be happy to attend a meeting to introduce himself; the first point of contact is still PCSO Helen Wilson. She will continue to send her monthly report and to attend our meetings where possible. Councillor Seed said that Wiltshire Police has lost 20% of its manpower, but would still look after rural areas. It was agreed to invite PC Hough to a meeting in the New Year.

Councillor Seed reported that there will be a **boundary review** for the next General Election which is most likely to bring changes to parish boundaries. Currently there are 5 seats in Wiltshire but this is likely to go down to 4 ½, plus Swindon. Comment can be fed back through the Boundary Commission website.

**Parish Clerk:** The Chairman introduced Mrs Sue Bond, who had been successful at interview for the position as Clerk. Mrs Bond would be working in conjunction with the current Clerk until the end of the year, to ensure a smooth handover.

**Parking in Spout Lane** – The Parish Clerk reported that she had received a number of responses to the PC's letter to residents in Sells Green. There was a mixed response. All wanted to see some kind of parking restrictions put in place, but for it not to affect the residents, or visitors to the canal. Mr Rigg stressed that the canal was a village asset, and for visitors to be encouraged. It was agreed that there was no easy solution to the parking problems. A sub-group to be set up with Mr Rigg, Mr James, Mr Wiltshire and Mr Manning to try to find a solution to the problems at Spout Lane

and by The Barge. The Clerk to write to the C & RT head office, advising that we have a problem with parked cars by the entrances to the canal, what evidence do they need to see from the Parish Council to demonstrate that boats are remaining in the parish, and that the canal dwellers' cars are causing a nuisance.

**Sandridge Solar Agreement** – Mrs A'Bear proposed that this year's grant be spent on the Defibrillator project. Seconded by Mr James and unanimously agreed.

**Defibrillator Project** - Mr Wood had received a letter from the BHF confirming that the PC had had been successful in its grant application to buy a BHF Community Package containing a WEL Medical IPAD AED and a Call Push Rescue training kit. A cheque for £400 to be sent off to the BHF to pay the balance. A discussion took place on the type of protective cabinet to be bought. A decision was taken to buy the yellow style cabinet at a cost of £499 + VAT. Proposed by Mr James, seconded by Mrs Heatley and unanimously agreed. Mr Wood to forward details to the Clerk, in order to purchase the cabinet before the next meeting. Mr Wood was thanked for all his work on the defibrillator project. The PC to investigate the on-going costs of maintaining the defibrillator, and a suggestion that fundraising projects be organised to fund its annual maintenance and replacement of batteries and pads.

**Neighbourhood Plan** - Mrs A'Bear reported that the local business survey had just been sent out. Responses would be chased up in three weeks time. The committee were now working on a vision statement and objectives and methodology for any sites that come forward for consideration. It was reported that a Council Neighbourhood Link Officer would attend the next meeting. The unanswered questions relating to the Housing Needs Survey have been passed to Kate Stethridge and she will respond to the PC; the questions to be forwarded to Cllr Seed. Mrs A'Bear reported that Wiltshire County Council is behind with its consultation plans over SHLAA sites, and this should be available in January. With the co-option of Mrs Akerman onto the Parish Council, the Neighbourhood Plan committee would need to recruit more parishioners to ensure that the committee was not top heavy with councillors. Currently there are 5 councillors and 5 parishioners on the Committee.

**Seend Road Safety Initiative** - Mr Murch welcomed Mr Brian Crisp and Dr Nigel Knott, two of the authors of the SRSI report. He thanked them for their thorough and well-documented report and would put in writing the Council's appreciation of their research. Mr Crisp and Dr Knott said they would welcome any constructive criticism of the report from the parish council and the Neighbourhood Plan Committee. The parish clerk was asked to collate any village responses to the report. Mrs A'Bear said that it was helpful that they had clearly highlighted which areas they wanted the Parish Council's support. The crossroads at the Bell was highlighted as the major traffic problem and urgent action was required on how best to tackle it. The suggestion of a roundel or roundabout was discussed. The need for a pedestrian crossing near the Church, and a pavement in Seend Cleeve between Little Mitchells Farm and New Buildings was also highlighted. The next stage of the report was to collect feedback from the parish and to collect evidence from other villages to see what traffic calming measures they had undertaken, and how they could be implemented in Seend.

Mr Crisp and Dr Knott urged the parish council, to act on the following:

- Increase and improve better road signage around the village.
- Put pressure on local transport companies to stick to the designated freight route.
- Actively pursue, through Wiltshire CC, a crossing point near the Church.
- Ensure that the VAS is working properly.
- To compile a record of all traffic accidents not reported to the police.
- To investigate installing a gated entrance at each end of the village.
- To set a deadline for comments to the SRSI by the end of the November, to be collated by the Parish Clerk.
- To investigate the 85<sup>th</sup> percentile from metro cam results.

Mr Wood suggested that there were some issues that could be tackled quite quickly, for example, ensuring that all speed signs are clearly visible, by clearing vegetation. Another suggestion was 30 mph stickers on dustbins. It was reiterated that any proposals would have to go through the CATG.

### **Planning Application Ref: 16/08923/FUL and 16/09388/LBC**

3 High Street

Internal alterations to form bedroom and single storey extension dining area

Three councillors declared an interest. Acceptance proposed by Mr Rigg, seconded by Mr James, unanimously approved.

### **Date of next meetings**

The date of the next meetings are **Tuesdays 29<sup>th</sup> November 2016 and 31<sup>st</sup> January 2017**, at Seend Community Centre at 7.30 p.m.

Mrs Rosemary Fisher, Clerk

Full Parish Council minutes can be found on [www.seendparishcouncil.co.uk](http://www.seendparishcouncil.co.uk)

### **THE BELL INN**

You will all be aware that the Bell Inn has been closed for some time for refurbishment. Wadworths have indicated that they have been unable to recruit a suitable licensee and feel it necessary to look at alternative uses for the Bell to avoid the property remaining unoccupied any longer than necessary. They have instructed agents to investigate and understand they may be making a new planning application in the near future.

The Parish Council has made tentative enquiries about registering The Bell as a village asset, and would very much welcome the views of residents.

### **DEFIBRILLATOR FOR SEEND**

Readers will have noted that the Parish Council has been working on obtaining a defibrillator for the Parish. This will arrive and be installed shortly at the Community Centre in Rusty Lane.

This year's **allocation of funds from the Sandridge Solar installation** will be spent on acquiring and installing the defibrillator, including a special cabinet and supplies.

## **WILTSHIRE COUNCIL NEWS FROM CLLR JONATHON SEED**

*Unfortunately we were unable to include Cllr Seed's article for this edition, apart from his closing words:*

"... may I wish all residents of Seend and Bulkington a Very Happy Christmas and a prosperous New Year."

---

### **SEEND SPORTING AND DRAMATIC NEWS**

#### **Cricket : Chair Brian Hunt.**

Although the season finished a good few weeks ago the end of season awards event has been delayed, provisionally, until 21st January, however I can confidently predict that the delivery of the season will go to Ben and Lucy King for their second son Freddie. Congratulations to all concerned!



#### **Tennis : Chair Elaine Davies.**

The annual somewhere around Christmas social event is being hosted this year by Devizes tennis club on 9th December which Ric tells me he thinks that he attended but cannot be absolutely sure.

The winter tennis league continues with Pamela Akerman (828969) at the helm. The format is mixed doubles, but more Seend men are needed! Sign up now please.

With the move of David and Susie Meharg to Potterne Wick I hope that the opportunity of playing on one of the finest grass courts in the south west will not be lost and we all look forward to welcoming the new incumbents at Seend Row House to the peculiarities of local tennis.

Finally, like every other small tennis club we congratulate Andy and Jamie Murray for their fantastic year of tennis both finishing with a number 1 world ranking.

#### **Skittles :- principal boy :- Josh Hamblin.**

There are currently three men's skittles teams in the Melksham and District Skittles League. Seend A are presently sitting on top of the Premier Division with 33.5 points, well clear of any of their rivals, and another league title beckons. Meanwhile Seend B and Seend C are holding their own in division 2 and hopefully they will achieve promotion over the next few years with the target being to eventually join the A team in the top flight.

#### **Short Mat Bowls :-**

Colin tells me that the winter season is going reasonably well with the boys winning both their away matches by 6 to 2 but then losing their one home match to date by the same margin. Colin says that unless the proverbial socks are pulled up then he might have to consider calling for the bar to be closed during the fixtures contested in the Community Centre. A little bit Draconian there, Colin !

Stop Press :- see Rob's notice board for special offers and discounts available during SMB home matches. (Rob says 'What!?!' Ed.)

**The Turf :-** It is early days yet but keep an eye on the form of the young filly Steaming who is perhaps beginning to make her mark and could prove to be worth a small wager mid way through next year..... as in 50p each way.

**Dramatic News :-** I understand that this year's village panto is to be a novel and interesting interpretation of that old favourite 'The Emperor's New Clothes'. The performances will be on 16<sup>th</sup> and 17<sup>th</sup> February at 7.30pm and 18<sup>th</sup> February at 7pm in the Community Centre.

*All news for the February edition in by January 14<sup>th</sup> please.*

Frankie Goddard, 828488

---

## **PERSONAL ADS**

*(Small personal ads - not from businesses - can be left at the Post Office or delivered to Tessa Doe at 6 New Buildings with payment of £2 please.)*

**WANTED** – Secure garage or similar for storage of a compact tractor and accessories required urgently. Please call 07885 103071.

---

## **BITS AND BOBS**

### **SCOTTISH & SOUTHERN ELECTRICITY Priority Services Register**

People who are particularly dependent on electricity supply, such as pensioners, parents of young babies, people with disabilities or chronic illnesses, can apply to be listed on a Priority Services Register to receive special help and advice in the event of a power cut.

Please call 0800 294 3259, or from a mobile call 0345 072 1900, or 0800 316 5457 for a text phone. See [www.ssepd.co.uk/PriorityServicesRegister](http://www.ssepd.co.uk/PriorityServicesRegister).



**WILTSHIRE MUSIC CENTRE** is purpose-built concert hall located in Bradford on Avon, offering a diverse programme of world-class music year round, and specialising in folk, jazz and classical music. Located only 20 minutes drive from Seend, Wiltshire Music Centre brings international musicians of the highest calibre within access of local communities in Wiltshire. Highlights in the next two months are below:

**Sat 10<sup>th</sup> December** 7.30pm, The Alan Barnes Octet: A Jazzy Christmas Carol

**Fri 16<sup>th</sup> December** 7.30pm, La Serenissima: The Musical Grand Tour

**Wed 21<sup>st</sup> December** 7.15pm, The Royal Ballet: Nutcracker (Livestream)

**Sat 14<sup>th</sup>-Sun 15<sup>th</sup> January** Bradford Roots Music Festival 2017

**Sat 21<sup>st</sup> January** 7.30pm, Christian Garrick & the Budapest Cafe Orchestra

**Sun 22<sup>nd</sup> January** 4pm, Men with Horns go Bohemian

**Sat 28<sup>th</sup> January** 7.30pm, Matthew Bourne's Swan Lake (Livestream)

You can visit [wiltshiremusic.org.uk](http://wiltshiremusic.org.uk) for more details or call 01225 860 100 to book.



## HAVE YOU GOT TIME FOR VICTIMS OF CRIME?

You can become a Victim Support Community Volunteer. No previous experience is necessary. However enthusiasm, creativity and commitment are essential. For more information please contact the Wiltshire office: 01380 738878 or via email: [wiltshire@victimsupport.org.uk](mailto:wiltshire@victimsupport.org.uk)



**Lavington Community Choir invites you to  
an Evening of Christmas music and a festive buffet supper  
on Thursday December 15<sup>th</sup> at 8pm  
in Market Lavington Community Hall**

Tickets £6 will be available from Devizes Books, Market Lavington Post Office or Sue Ivey at Yew Tree Cottage, Little Cheverell from November 17<sup>th</sup>.

## Advent choral music from the choir of Magdalen College Oxford

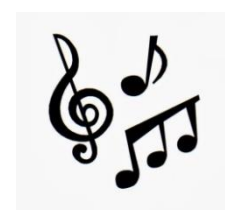
Edington Arts' very successful 2016 concert series comes to a festive conclusion at 7.30pm on Saturday 10<sup>th</sup> December in Edington Priory Church. An Advent Concert with mulled wine and mince pies will be given by the wonderful choir of Magdalen College, Oxford. If you love the Carols from Kings on Christmas Eve radio, you'll love this.



Tickets are selling very fast; there are by now only a few front nave and rear nave tickets left, though there is good availability at the sides. Contact Chrissy on 01380 831256 or [sue@edingtonarts.org](mailto:sue@edingtonarts.org) as soon as possible to make sure you get a seat. Prices in advance are £20, £15 and £10 with 18 and under coming free; if you buy on the night you will need to add £2 per ticket.

## CALNE CHORAL CHRISTMAS CONCERT:

A CONCERT OF SEASONAL CAROLS, SONGS AND READINGS conducted by Philip Springate. On 10th December 2016, at 7.30pm, at St. Mary's Church, Calne. Ticket includes mince pie and a glass of mulled wine.



## MELKSHAM CHORAL SOCIETY

Melksham Choral society will be holding their next concert on Saturday 3rd December at 7.30pm in the United Church. It will be an Italian evening with organ accompaniment and excellent soloists and will include Puccini's Messa Di Gloria and a selection of opera choruses from Mozart to Bizet but all in Italian. Tickets are £10 from choir members or the Tourist Information in Melksham or £12 on the door. We would love to see you there.

## MARKET LAVINGTON CHRISTMAS COUNTRY FAIR

A big thank you to everyone who came to and/or supported the Christmas Country Fair in Market Lavington Community Hall on November 12th. The Fair raised an excellent total of £1050 for ABF The Soldiers' Charity, which is our highest total. Thank you all very much!

Sue Bonney

## **FRIENDS OF ERLESTOKE PRISON - CHRISTMAS CONCERT**

**Saturday 3rd December 2016 7pm (doors open 6.15pm)**

**St John's Church, Long Street, Devizes, SN10 1NP**

**with Wessex Male Choir and Shrewton Silver Band**

Mulled wine and mince pies will be available during the interval.

Tickets £15 - under 16s free

To download a seat order form, please visit: [www.friendsoferlestokeyprison.com](http://www.friendsoferlestokeyprison.com) or email: [info@friendsoferlestokeyprison](mailto:info@friendsoferlestokeyprison) and we'll send you a form.



---

### **Christmas Concert**

#### **Cantamus Chamber Choir and the Bristol Brass Consort**

Friday December 16<sup>th</sup> 7.30pm St James' Church Trowbridge.

Tickets £8 (£4 for under 18s) from the Wiltshire Music Centre 01225 860100.

In support of one of the Mayor of Trowbridge's charities

– Breakthrough Trowbridge,

dedicated to helping and supporting local homeless and vulnerable people.

Choir website: [www.cantamuschamberchoir.co.uk](http://www.cantamuschamberchoir.co.uk)

---

#### **WHO have some real treats for you this Christmas.**

Our concert will include excerpts from Vivaldi's Gloria and Haydn's Creation also gorgeous Christmas music by Rutter, Holst, Stanford, Warlock & Bryd as well as an opportunity to raise your voices with traditional carols.

#### **Wednesday 14th December at 7.30pm at St John's Church Devizes**

Tickets £8, include mince pies and mulled wine, are available from Devizes Books 01380-725944

---

### **The Steeple Ashton Christmas Tree Festival**

*St. Mary the Virgin Parish Church*

**Thursday 8<sup>th</sup> December to Sunday 11<sup>th</sup> December from 10am -5pm each day**

Refreshments and a Christmas stall - *Featuring:*

**Friday 9<sup>th</sup> December at 7.30pm**

*Christmas Concert by Westbury Choral Society*

***Tickets £10 from Village Shop 01380 871211 (includes a glass of wine)***

**Sunday 11<sup>th</sup> December at 10.30am**

*Family Toy and Celebration Service at 10.30am*

**and at 3.30pm *A Festive Christmas Sing-along***

With Keevil C of E Primary School Choir, St Mary's Church Choir,  
the A Cappella Singers and the popular Steeple Rocks Choir

*Collection in aid of the installation of a kitchen in St Mary's Church.*



## **SAMARA'S AID**



We've been asked to draw attention to a self-funded appeal, run under the auspices of Feed the Hungry, a registered charity, sending aid to refugees and communities in the Middle East affected by the current crisis, as well as funding medical facilities. There are details on the website of what is required and how it is distributed. Samara's Aid was started by a young mother who was moved by the people's unimaginable suffering. If you would like to help, see: [www.samarasaidappeal.org](http://www.samarasaidappeal.org)

**SMART METERS** are being rolled out across Britain mainly from 2017 onwards; a few homes have them already. They offer a way to keep track of energy use.

We are organising information drop-in sessions as well as a short training event on smart meters and how to get the most from them in **Seend Community Centre's** Kennet Room on **Friday 2nd December**.

**DROP IN ENERGY ADVICE sessions 10AM-12NOON and 2-6PM – EVERYONE IS WELCOME.**

Help will be available for anyone on anything energy-related, e.g. check if you're on the best tariff, check if you're entitled to the £140 Warm Home Discount, advice on use of heating controls, grants for home improvements, fuel debt, changing from prepay to credit meter etc.

**SMART METER TRAINING for potential volunteers** to help at future events (including the 2-6pm drop-in session in the Kennet Room) is from 12noon to 2pm (lunch included). To book a place at the volunteers' training session, please email [JUSTIN.BEAR@CSE.ORG.UK](mailto:JUSTIN.BEAR@CSE.ORG.UK) or call 0117 934 1417 and indicate any dietary requirements.

*CSE is an impartial Bristol charity which offers free energy advice to householders in the South West. We help people to stay affordably warm in their homes, to benefit their health and financial circumstances.*



## **FRESH CHRISTMAS TREES**

**YOU CHOOSE – THEN WE CUT  
CUTTING THE FIRST THREE FRIDAYS IN DECEMBER**

**11A.M. – 4 P.M**

**ANY SIZE £25      01380 828214**

**Marsh Farm, Worton, Devizes, SN10 1SG**

## **THE SEEND FUND – Your local fund**

Remember the Seend Fund is your local fund. Anyone living in or closely associated with Seend can apply by e-mailing the secretary (anitashea@hotmail.co.uk) or writing to her at 34 Seend Cleeve, Melksham SN12 6PY. If you find yourself in financial difficulties the fund might be able to help with anything from school uniforms to heating bills. Don't hesitate to send details, saying how much you need, what it is for and when you need it by. Even if the fund has helped you before, your request will be sympathetically and confidentially considered. Although the fund is intended to help individuals, if there are any organisations or groups who need support to include someone with special needs in an educational activity, or who know of members who are struggling financially, the Fund may be able to help.

## **BAGS OF HELP**



Bags of Help is Tesco's local community grant scheme where the money raised from the 5p bag levy in Tesco stores is being used to fund thousands of community projects across the UK. The Tesco Bags of Help scheme is moving into its next round with a new revised scheme and applications will now be accepted on a permanent basis.

For more information about the scheme and details on how to apply see - <http://www.groundwork.org.uk/Sites/tescocommunityscheme/pages/Category/apply-for-a-boh-grant-tes2>

## **DOGS FOR ADOPTION – HOMES NEEDED URGENTLY**

We have several wonderful dogs in Romania currently seeking their forever home before winter arrives. Could YOUR home be the perfect setting? Photos are available. Please call Sarah on 07921 801370 or visit the following websites:

<https://www.facebook.com/K9Angels>

<http://k-9angels.org/>

**Home Start Volunteers** provide support and friendship for families. The 40-hour training course leads to a professional qualification. The next course starts on February 22<sup>nd</sup>. See [homestartkennet.co.uk](http://homestartkennet.co.uk) or call 01672 569457 for more info.

**And finally.....**

Very best wishes for the festive season to all our readers from your Spotlight team!  
Ho! Ho! Ho!



**USEFUL CONTACTS:** *Please tell Spotlight if your group's contact details change*

**Church:** Priest in Charge: Revd Maureen Allchin 01380 828931. Benefice Administrator: Mrs Sue Taylor 01225 709360. Churchwardens: Holy Cross Seend: Mrs Anne Ewing, 01380 828557, Mrs Tina Yockney 01380 827139; Christ Church Bulkington: Mrs Liz Futter 828485, Mrs Anne Saywell 828931; LPAs: Jane Goman 827121, Liz Futter 828485, Rosie Forsey 828843, Len Murray 828513, Sue Noad 870433, Sue Rose 871665 & Tina Yockney 827139. Bell Tower Captain: L Murray 828513.

**Irene Usher Memorial Hall** (The Pavilion) Bookings - Richard Walker on 828250

**Bulkington Village Hall** - Nev Boulton 828101 or Roger Futter 828485

**Bulkington Playing Field:** Chairman Jamie Streeter - 828835 - jamiestreeter@hotmail.co.uk

**Seend Community Centre/Club** - 828796 (7.30-11pm only). Bookings: 07703 814111.

Website: [www.seendcommunitycentre.com](http://www.seendcommunitycentre.com) and find us on facebook

**Seend Shuttle:** Bookings and drivers: Alison Cobbing 07951030491 or 01380 850511

**Seend Parish Council Clerk** – Mrs Sue Bond 828537 [www.seendparishcouncil.co.uk](http://www.seendparishcouncil.co.uk)

**Seend's Wiltshire Councillor** - Jonathon Seed 01380 850695 [jonathon.seed@wiltshire.gov.uk](mailto:jonathon.seed@wiltshire.gov.uk)

**Seend Website:** [www.seend.org.uk](http://www.seend.org.uk) - Neil Yockney 827139. **Seend School** - 828334

**Bulkington Website:** [www.bulkington.org.uk](http://www.bulkington.org.uk)

**Rights of Way Warden** – Paul Millard, 01225 712821

**Community Beat Manager** for Seend PC Emily Thomas. Tel: 101, or e-mail [melkshamruralsouthnpt@wiltshire.pnn.police.uk](mailto:melkshamruralsouthnpt@wiltshire.pnn.police.uk).

**Seend Fund (village charity):** 01380 828757

**MP Claire Perry**, 01380 729358 (M-F 9.30am-1pm) [claire.perry.mp@parliament.uk](mailto:claire.perry.mp@parliament.uk)

**MEP** - Graham Watson 01458 252265. **Melksham Area Board** – 07917 721371

**100+Club Draw** – Karen & Steve Cubberley – [steven@cubberley.com](mailto:steven@cubberley.com) - tel: 828423

**Book Clubs** - the original: Sylvia Ewin 828325 - the other: Frank Teasdale 828617

**Bouncy Club** - Paulette Pardoe 07944 300350

**Cricket Club** - John Wiltshire 07791 144248

**Fawlty Players Panto Group** - Tessa Doe 828617 & find Seend Village Pantomime on facebook

**Fete** – Nick Vaux - [seendlrf@gmail.com](mailto:seendlrf@gmail.com) ([www.seendfete.co.uk](http://www.seendfete.co.uk))

**Flower Show** – Brian Jaques 827137

**FoSS (Friends of Seend School)** Mel Steel 07739 899741

**Historic Houses Club** - Mary Warren 01225707357 or Neil Yockney 827139

**LINK Scheme** - 075320 55560

**Lye Field Committee** – [www.seendlyefield.org](http://www.seendlyefield.org)

**Neighbourhood Watch** - Brian Hunt (Seend) 828581; Cavan Moroney (Sells Green) 828606; Owen Burton (Seend Cleeve) 828820; John Scott (Bulkington) 828026.

**Preschool** - Liz Futter 828485

**Poetry Group** - Tessa Doe 828617

**Ramblers** - Gerald Salter 01225 706451

**Royal British Legion** - Roger Brind 828830

**Seend Singers** - Bob McCulloch 828508

**Short Mat Bowls Club** - Colin Waldeck 828946

**Tennis Club** - Ric Ellinger 828687

**Theatre Club** - Sylvia Ewin 828325; Marion Whitehead 828612

**WEA** – Tessa Doe 828617

**Wheelchairs to borrow** - Sue and Graham Jones in Seend Cleeve, tel: 01380 828354

**WI** - Fiona Johnson on 828401 and Gill Acornley 01225 707218

**Wine Circle** – Steve Parsons 07974 347487 or Simon McManus 07896 711764

# Seend Post Office & Village Store

01380 828250

NEWSPAPERS & MAGAZINES

FRESH FRUIT & VEGETABLES

WINES BEERS & SPIRITS

GROCERIES

THE HEALTH LOTTERY

POSTCARDS & STATIONERY



	Village Store	Post Office
Mon	9.00 - 5.30	9.00 - 5.30
Tues	9.00 - 5.30	9.00 - 5.30
Wed	9.00 - 5.30	9.00 - 4.30*
Thurs	9.00 - 1.00	9.00 - 1.00
Fri	9.00 - 5.30	9.00 - 5.30
Sat	8.30 - 1.00	9.00 - 1.00
Sun	9.00 - 10.30	Closed
Bank	9.00 - 10.30	Closed
Holidays		
* note early closing		